



COMBINED WEATHER SENSOR "WENTO-IND"

Wind parameters · air temperature · relative humidity · barometric pressure · dew point / 6 parameters and optional precipitation!

Unique all-rounder...

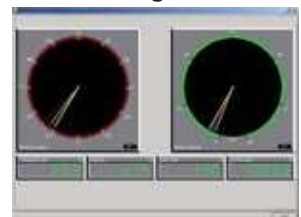
the new generation of a professional, particularly compact weather station for universal application! Measurement of 6 meteorological parameters and the precipitation quantity (optional), and that at an optimum price-performance ratio. The wind sensors and the integrated weather module have a very robust design. High-quality special alloys make this weather station environmentally resistant and extremely stress resistant. Reliable measurement of meteorological parameters is ensured even under extreme weather conditions.

- ▶ extremely robust and compact
- ▶ reliable year-round operation in all climate zones
- ▶ simple and rapid mounting
- ▶ serial interface for direct connection to PC technology

- industrial applications
- building services
- environmental measurements under extreme environmental conditions



Software SSDL
The software for direct connection to PC and visualization of the instantaneous and average values as well as data storage in Excel!



Professional Line	(14516) Combined Weather Sensor WENTO-IND	Id-No. 00.14516.210 001	
<u>Parameters:</u>	Measuring range:	Accuracy:	Resolution:
Wind direction:	0...360°	± 1°	< 1°
Wind speed:	0.3...75 m/s	± 2 % FS at 0.3...50 m/s	< 0.1 m/s
Relative humidity:	0...100 % r. h..	± 3% (10...90%) • ± 4% (0...100%)	0.5 % r. h.
Barometric pressure:	600...1100 hPa	± 2 hPa (-30...+70 °C)	0.1 hPa
Air temperature:	-30...+70 °C	± 0.8 °C (influence of the shelter see manual)	0.1 °C
Precipitation:	see precipitation sensors (*precipitation protocol activating WIXDR: Id. 97.14516.000 000)		
Range of application:	temperature -30...+70 °C heated • wind speed 0...80 m/s • 0...100 % r. h.		
Protocols:	NMEA 0183 • WIMWV • WIMHU • WIMMB • WIMTA • WIXDR *		
Interface:	serial RS 422/ Talker Baud rate 4800 • 1 Hz (at measuring cycle 10 Hz) • 8 N 1		
Supply voltage:	sensor 11...28 V _{DC} / 50 mA at 24 V _{DC} , max. 120 mA • heater electr. controlled 24 V _{DC} / 2x9 W		
Housing:	saltwater-proof aluminium especially-anodized, protective paint (RAL 9006) • IP 65 in upright position		
Dimensions/ Weight:	H 440 mm • B max. 475 mm • mast mounting: Ø 51 mm pipe • 2.3 kg		
<u>Accessories:</u>	Indicator e. g. (14742) METEO-LCD • Data logger e. g. SYNMET • Meteo LAN Communicator (95666) • Traverses/ masts/ software/ power supply units s. "Periphery" (1642 U66) Cable 10 m • with 12-pole bayonet plug • ready-made		
32.16420.066 100			