



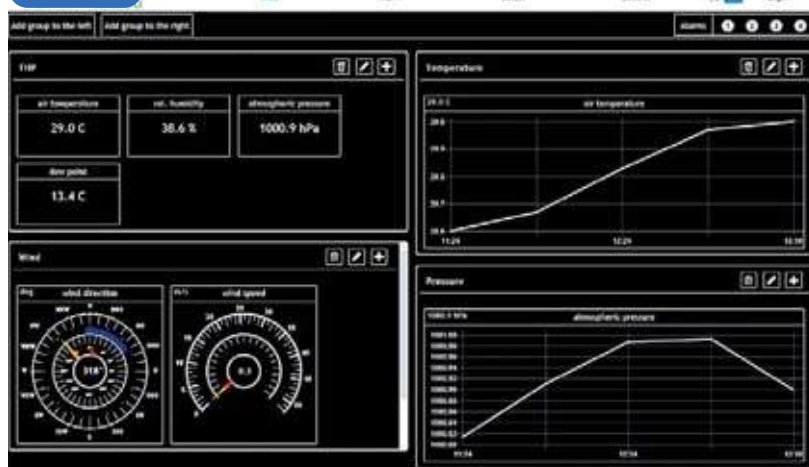
## Smart serial solution

This means for you: The data logger met[LOG] and its met[app] quickly and easily transfer your climate data into your network (LAN). The met[LOG] has an autoconfiguration via plug & play for the uncomplicated commissioning of the serial LAMBRECHT meteo sensors. Visualisation of your data is easily done via integrated met[APP] in your web browser.



### Features and advantages:

- real-time access to measurement data via integrated web server, visualised in your browser with met[APP]
- data management includes wind speed, wind direction, air humidity, air temperature, air pressure and global radiation as well as amount of precipitation
- met[LOG] calculates trends and patterns, and automatically performs corrections based on altitude and air pressure
- thanks to its digital outputs the met[LOG] immediately issues a warning or raises an alarm
- plug & play · auto-configuration by push of a button allows full working capability within seconds
- various combinations are possible: 7 interfaces allow connection of 4 analog and 3 serial sensors



**met[APP]** · Our browser app which is integrated in the met[LOG] · for easy visualisation of the current climate data in your network. Platform-independent on your PC, tablet or smartphone.

- Displays the instantaneous values of your LAMBRECHT meteo station
- Exports the measured values stored by the met[LOG]
- Configures the met[LOG]

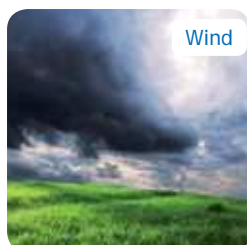


## Technical Data

Professional Line	Data Logger met[LOG] incl. SD card	Id-No. 00.95800.010000
Interface:	3 x RS 485 • A+, B-; half duplex	
Input:	4 analogue/ digital input • range: 0...10 V (configurable) • $R_i \geq 10 \text{ k}\Omega$	
Output:	4 digital output • digital output max. voltage: $V_0 - 0.1 \text{ V}$ up to $V_0$ • max. 0.7 A	
Ethernet:	10/100 BaseT • connector RJ45 shielded	
Power Supply ( $V_0$ ):	11...32 V DC • Caution: Power supply switched through at the digital outputs	
Power consumption:	500 mW typically (no digital output active)	
Operating temperature:	-40...+85 °C	
ESD:	IEC 61000-4-2 up to 8 kV	
Mechanics:	DIN rail mount 3 TE	
Dimensions:	17.8 x 89 x 60 mm	
Weight:	62 g	
Websserver:	integrated web page for visualisation of instantaneous values • configuration web page • data export	
Alarm:	8 free configurable warning channels • direction dependent wind warning • logical link of warning channels	
Auto configuration:	automatic configuration of connected serial Lambrecht sensors	

## Flexible options

Various sensors are available to create your individual system solution. We have summarized the selection criteria for you in the following overview. You can choose between 6 physical parameters, 2 inputs, heated and unheated sensors - or choose one of the preconfigured met[LOG] stations on page 11.



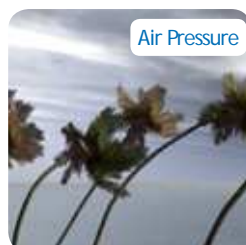
Wind



Precipitation



Humidity/Temperature




Air Pressure



Global Radiation

## Connectable Sensors

met[LOG] has 3 serial and 4 analog inputs.

 	Parameter						
	Wind	Precipitation	Temperature/ rel. Humidity	Air Pressure	Global Radiation	Heating	Input
EOLOS-IND	✓		✓	✓			serial
EOLOS-IND H	✓		✓	✓		✓	serial
WENTO-IND	✓		✓	✓		✓	serial
u[sonic]	✓					✓	serial
EOLOS-MET T	✓						serial
EOLOS-MET TH	✓					✓	serial
ARCO-SERIAL	✓					✓	serial
PREOS	✓					✓	serial
WENTO-MET	✓					✓	serial
rain[e], unheated		✓					serial
rain[e], heated		✓				✓	serial
8095 THP			✓	✓			serial
8095 THP-NAV			✓	✓			serial
INDUSTRY	✓					✓	analog
PRO-WEA	✓					✓	analog
15189, 2 cm <sup>3</sup> , unheated		✓					analog
15189, 2 cm <sup>3</sup> , heated		✓				✓	analog
15189, 4 cm <sup>3</sup> , unheated		✓					analog
15189, 4 cm <sup>3</sup> , heated		✓				✓	analog
Sensor 8093.11			✓				analog
Air pressure sensor 8121				✓			analog
Pyranometer 16106					✓		analog
Pyranometer 16103					✓		analog



### Easy access to weather data

The compact data logger met[LOG] is a genuine multi talent.

Take a look at the technical data of the sensors that can be connected and combine your individual system solution.

## Serial Sensors



### Static Weather Sensor EOLOS-IND/H

Id-No. 00.16430.000002 unheated • 00.16430.010002 heated

**Measuring range:** Wind direction: 0...360° • Wind speed: 0.1...85 m/s • Air temperature: -40...+70 °C • Relative humidity: 0...100 % r. h. • Air pressure: 600...1100 hPa

**Range of application:** -30...+70 °C (unheated · under non-icing conditions) • -40...+70 °C (heated) • 0...100 m/s • 0...100 % r. F.

**Accuracy:** Wind direction: ± 3° • Wind speed: ± 0.5 m/s ± 5 % of the meas. value • Air temperature: ± 0.8 °C (v > 2 m/s) • Relative humidity: ± 3 % (10...90 %) • ± 4 % (0...100 %) • Air pressure: ± 2 hPa (-40...+85 °C) · ± 0.5 hPa at 25 °C



### Combined Weather Sensor WENTO-IND

Id-No. 00.14516.210001

**Measuring range:** Wind direction: 0...360° • Wind speed: 0.3...75 m/s • Relative humidity: 0...100 % r. F. • Air pressure: 600...1100 hPa • Air temperature: -30...+70 °C

**Range of application:** -30...+70 °C heated • 0...80 m/s • 0...100 % r. h.

**Accuracy:** Wind direction: ± 1° • Wind speed: ± 2 % FS at 0.3...50 m/s • Relative humidity: ± 3 % (10...90 %); ± 4 % (0...100 %) • Air pressure: ± 2 hPa (-30...+70 °C) • Air temperature: ± 0.8 °C



### Combined Ultrasonic Wind Sensor u[sonic]

Id-No. 00.16470.000000

**Measuring range:** Wind direction: 0...359,9° • Wind speed: 0...75 m/s

**Range of application:** -40...+70 °C (with heating -50...+70 °C) • 0...100 % r. h.

**Accuracy:** Wind direction: < 2° (> 1 m/s) RMSE • Wind speed: ± 0.2 m/s RMSE (v < 10 m/s) • ± 2 % RMSE (10 m/s < v < 65 m/s)



### Static Wind Sensor EOLOS-MET/TH

Id-No. 00.16430.400002 unheated • 00.16430.410002 heated

**Measuring range:** Wind direction: 0...360° • Wind speed: 0.1...85 m/s

**Range of application:** -30...+70 °C (unheated · under non-icing conditions) • -40...+70 °C heated • 0...100 m/s • 0...100 % r. h.

**Accuracy:** Wind direction: ± 3° • Wind speed: ± 0.5 m/s ± 5 % of the meas. value



**Combined Wind Sensor ARCO-SERIAL**  
Id-No. 00.14581.010010

**Measuring range:** Wind direction: 0...360° • Wind speed: 0.3 ... 75 m/s  
**Range of application:** -30...+70 °C (unheated · under non-icing conditions) • 0...80 m/s • 0...100 % r. h.  
**Accuracy:** Wind direction: ± 1° • Wind speed: ± 2 % FS at 0.3 ... 50 m/s



**Static Wind Sensor PREOS**  
Id-No. 00.16440.014002

**Measuring range:** Wind direction: 0...360° • Wind speed: 0.1...65 m/s  
**Range of application:** -40...+70 °C heated • 0...100 m/s • 0...100 % r. h.  
**Accuracy:** Wind direction: ± 3° • Wind speed: ± 0.5 m/s ± 5 % of the meas. value



**Combined Wind Sensor WENTO-MET**  
Id-No. 00.14516.010001

**Measuring range:** Wind direction: 0...360° • Wind speed: 0.3...75 m/s  
**Range of application:** -30...+70 °C heated • 0...80 m/s • 0...100 % r. h.  
**Accuracy:** Wind direction: ± 1° • Wind speed: ± 2 % FS at 0.3...50 m/s



**Weighing Precipitation Sensor rain[e]**  
Id-No. 00.15184.000000 unheated • 00.15184.400000 heated

**Measuring range:** 0...20 mm/min resp. 0...1200 mm/h  
**Range of application:** 0...+70 °C (unheated) • -40...+70 °C (heated · no icing, no snowdrift)  
**Accuracy:** ± 0.1 mm/min resp. ± 6 mm/h



**Combined Sensor THP (8095)**  
Id-No. 00.08095.000000

**Measuring range:** Temperature: -40...+70 °C • Relative humidity: 0...100 % r.h. • Barometric pressure: 500...1100 hPa  
**Accuracy:** Temperature: ± 0.3 °C at (v > 2 m/s) · ± 0.4 °C (10...40 °C) · ± 0.8 °C (-10...+70 °C) • Relative humidity: ± 3 % (10...90 %) r. h. · ± 4 % (0...100 %) r. h. • Barometric pressure: ± 2 hPa (-30...+70 °C) ± 1 hPa (-10...+60 °C)





**Combined Sensor THP (8095-NAV) with membrane filter for special resistance to air pollutants · Id-No. 00.08095.001000**

**Measuring range:** Temperature: -40...+70 °C • Relative humidity: 0...100 % r. h. • Barometric pressure: 500...1100 hPa

**Accuracy:** Temperature: ± 0.3 °C at (v > 2 m/s) · ± 0.4 °C (10...40 °C) · ± 0.8 °C (-10...+70 °C) • Relative humidity: ± 3 % (10...90 %) r. h. · ± 4 % (0...100 %) r. h. • Barometric pressure: ± 2 hPa (-30...+70 °C) ± 1 hPa (-10...+60 °C)

## Analog Sensors



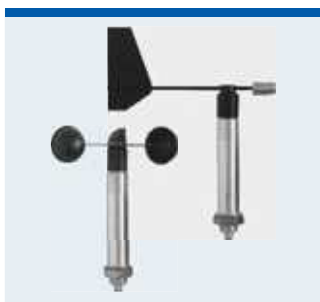
**Wind Sensor INDUSTRY · incl. cable**

**Id-No. 00.14567.100180 Wind direction • 00.14577.100 180 Wind speed**

**Measuring range:** Wind direction: 0...360° • Wind speed: 0.7...50 m/s

**Range of application:** -30...+70 °C (heated) • 0...60 m/s

**Accuracy:** Wind direction: ± 2° • Wind speed: < ± 2 % FS



**Wind Sensor PRO-WEA · incl. cable**

**Id-No. 00.14523.130080 Wind direction • 00.14524.100080 Wind speed**

**Measuring range:** Wind direction: 0...360° • Wind speed: 0.5...60 m/s

**Range of application:** -40...+70 °C heated • max. gusts 100 m/s • 0...100 % r. h.

**Accuracy:** Wind direction: ± 2° • Wind speed: ± 0.3 m/s ≤ 10 m/s • ± 0.5 m/s...60 m/s



**Precipitation Sensor (15189)**

**Id-No. 00.15189.002000 · 2 cm<sup>3</sup> volume of tipping bucket · unheated**  
**00.15189.402000 · 2 cm<sup>3</sup> volume of tipping bucket · heated**  
**00.15189.004000 · 4 cm<sup>3</sup> volume of tipping bucket · unheated**  
**00.15189.404000 · 4 cm<sup>3</sup> volume of tipping bucket · heated**

**Measuring range:** 2 cm<sup>3</sup>: 0...8 mm/min • 4 cm<sup>3</sup>: 0...16 mm/min

**Range of application:** 0...+70 °C metering (unheated · frost resistant down to -20 °C) • -20...+70 °C (heated · no icing, no snowdrift)

**Accuracy:** ± 2 % with intensity correction



**Temperature Humidity Sensor (8093.11) · incl. cable**

**Id-No. 00.08093.110000**

**Measuring range:** Temperature: -40...+60 °C • Relative humidity: 0...100 % r. h.

**Range of application:** Temperature: -40...+80 °C • Humidity: 0...100 % r. h.

**Accuracy:** Temperature: ± 0,2 °C at -27...+70 °C · Plus: ± 0.007 °C/ °C at: < +10 °C • > + 40 °C • Relative humidity: ± 2 % r.h. at: 5...95 % r. h. • +10...+40 °C · Plus: < 0.1 % r. h./ °C at: < +10 °C • > +40 °C

## Analog Sensors



**Air Pressure Sensor (8121) · incl. cable**  
Id-No. 00.08121.100002

**Measuring range:** 600...1100 hPa • switchable to 800...1100 hPa

**Range of application:** Altitudes 0...4000 m • Temperatures -20...+70 °C • Humidity 0...99 % r. h.

**Accuracy:** ± 1 hPa within the range of -10...+60 °C • < ± 2 hPa within the range of -20...-10 °C



**Pyranometer (16106) · incl. cable**  
Id-No. 00.16106.000080

**Measuring range:** 0...1400 W/m<sup>2</sup>

**Range of application:** -40...+60 °C

**Cosine error:** < 10% @ 80°



**Pyranometer (16103) 'Second class'**  
Id-No. 00.16103.050060

**Measuring range:** 0...1600 W/m<sup>2</sup>

**Range of application:** -40...+80 °C

**Calibration uncertainty:** < 1.8 % (k = 2)

## System Examples

