

AMERICA'S FOOT SWITCH LEADER

Full Line Catalog



NEMA Type 1, 2, 4, 6, 6P & 13
UL ENCLOSURE 1, 2, 4, 6, 6P & 13
CSA ENCLOSURE 1, 2, 4, 6, 6P & 13
EN 60529 Degree of Protection IP68
Meets IEC 60601-2-2

Drip tight • Dust tight • Watertight • Oil tight
GUARDED, COMPACT & WATERPROOF DESIGN

Materials of Construction:

- One Piece Cast Aluminum Housing Single Stage Momentary Contact
- Aluminum baseplate on unguarded models
- Single Pedal 1/2"-14 N.P.T. Threaded Conduit Opening is Standard
- Twin Pedal 3/4"-14 N.P.T. Threaded Conduit Opening is Standard

Features & Benefits:

- Non-Skid Feet To Minimize Movement
- Divider Bar on Twin Models aids in Reducing Accidental Operation of Multiple Pedals at Once
- 4 holes provided for rigid mounting to floor or equipment
- Heavy Gauge Steel Full Guard painted Alert Orange Covering Entire Foot Switch

Options:

- Linear (Hall Effect) mode models available (See page 38 for details)



Single	
Size (HxWxD):	4.50 x 6.00 x 7.00 In.
Weight:	6.00 lbs.
Twin	
Size (HxWxD):	4.50 x 11.00 x 7.00 In.
Weight:	10.00 lbs.

⚠ WARNING SEE PRODUCT WARNING ON PAGE 103							
SPECIFICATIONS (Special variations are available to the O.E.M. on special order on the models listed below)							
AGENCY APPROVALS	EN 60529 Degree of Protection	CATALOG NUMBER	DESCRIPTION	TYPE	CIRCUIT	FORM	ELECTRICAL RATING
UL, CE, C	IP68	88SH1-05	Momentary	Guarded	SPDT	C	16 A 125-250 VAC 1/2 H.P. 125-250 VAC 250 VAC Maximum
UL, CE, C	IP68	88SH2-05	Momentary	Guarded	DPDT	C	
UL, CE, C	IP68	TWIN 88SH1-05	Momentary	Guarded	Each Pedal SPDT	C	
UL, CE, C	IP68	TWIN 88SH2-05	Momentary	Guarded	Each Pedal DPDT	C	

Classic IV - No Guard



NEMA Type 1, 2, 4, 6, 6P & 13
UL ENCLOSURE 1, 2, 4, 6, 6P & 13
CSA ENCLOSURE 1, 2, 4, 6, 6P & 13
EN 60529 Degree of Protection IP68
Meets IEC 60601-2-2

Drip tight • Dust tight • Watertight • Oil tight
COMPACT & WATERPROOF DESIGN

Materials of Construction:

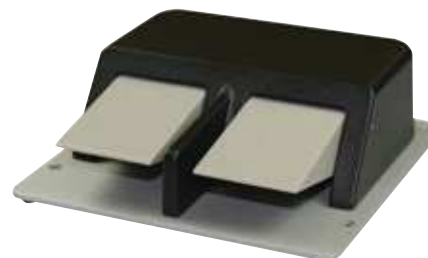
- One Piece Cast Aluminum Housing Single Stage Momentary Contact
- Aluminum baseplate on unguarded models
- Single Pedal 1/2"-14 N.P.T. Threaded Conduit Opening is Standard
- Twin Pedal 3/4"-14 N.P.T. Threaded Conduit Opening is Standard

Features & Benefits:

- Non-Skid Feet To Minimize Movement
- Divider Bar on Twin Models aids in Reducing Accidental Operation of Multiple Pedals at Once
- 4 holes provided for rigid mounting to floor or equipment

Options:

- Linear (Hall Effect) mode models available (See "Classic IV Linear" on page 38 for details)
- Heavy Gauge Steel Full Guard painted Alert Orange Covering Entire Foot Switch Available (See "Classic IV - Guarded" on page 39 for details)



Single	
Size (HxWxD):	2.50 x 4.19 x 7.00 In.
Weight:	1.75 lbs.
Twin	
Size (HxWxD):	2.50 x 7.40 x 7.00 In.
Weight:	3.63 lbs.

⚠ WARNING SEE PRODUCT WARNING ON PAGE 103							
SPECIFICATIONS (Special variations are available to the O.E.M. on special order on the models listed below)							
AGENCY APPROVALS	EN 60529 Degree of Protection	CATALOG NUMBER	DESCRIPTION	TYPE	CIRCUIT	FORM	ELECTRICAL RATING
UL SP CE	IP68	88SN1-05	Momentary	Unguarded	SPDT	C	16 A 125-250 VAC 1/2 H.P. 125-250 VAC 250 VAC Maximum
UL SP CE	IP68	88SN1B-05 ¹	Momentary	Unguarded	SPDT	C	
UL SP CE	IP68	88SN2-05	Momentary	Unguarded	DPDT	C	
UL SP CE	IP68	TWIN 88SN1-05	Momentary	Unguarded	Each Pedal SPDT	C	
UL SP CE	IP68	TWIN 88SN2-05	Momentary	Unguarded	Each Pedal DPDT	C	

¹8 ft. 14/3 cord without plug, green lead grounded.

NEMA Type 1, 2, 4 & 13
UL ENCLOSURE 1, 2, 4 & 13
CSA ENCLOSURE 1, 2, 4 & 13
EN 60529 Degree of Protection IP56

Drip tight • Dust tight • Watertight • Oil tight
MEDIUM DUTY COMPACT DESIGN



Materials of Construction:

- Cast aluminum body and treadle with steel base plate and nonskid base pad
- Single 3/4"-14 N.P.T. threaded conduit entry is standard

Features & Benefits:

- All models single stage momentary contact
- 2 holes provided for rigid mounting to floor or equipment

Options:

- Special threaded conduit entry available to the O.E.M. on special order (Dual / Metric)
- Single/Dual 1/2"-14 NPT threaded conduit entry
- Metric threaded conduit entry



No Shield	
Size (HxWxD):	2.25 In. x 3.50 x 6.20 In.
Weight:	1.50 lbs.
Shielded	
Size (HxWxD):	5.19 In. x 5.90 x 7.27 In.
Weight:	2.75 lbs.

⚠ WARNING SEE PRODUCT WARNING ON PAGE 103						
SPECIFICATIONS (Special variations are available to the O.E.M. on special order on the models listed below)						
AGENCY APPROVALS	EN 60529 Degree of Protection	CATALOG NUMBER	DESCRIPTION	CIRCUIT	FORM	ELECTRICAL RATINGS
	IP56	78SN1	Momentary	SPDT	C	20 A 125-250 VAC 1 H.P. 125-250 VAC Heavy Pilot Duty 250 VAC Max.
	IP56	78SN2	Momentary	DPDT	C	
	IP56	78SH1	Momentary / Shielded	SPDT	C	
	IP56	78SH2	Momentary / Shielded	DPDT	C	

EN 60529 Degree of Protection IP20 (IP68 Upon Request)

COMPACT DESIGN

Materials of Construction:

- Cast aluminum body painted black
- Cast aluminum treadle and base plate with nonskid base pad
- Internal strain relief clamp accepts a wide range of cable sizes

Features & Benefits:

- Single stage momentary contact
- Clean lines and compact design with a modest cost
- Versatility of this model makes it ideal for O.E.M. devices

Options:

- Special threaded conduit entry available to the O.E.M. on special order. (Dual / Metric)
- Custom cordsets and modifications are available to the O.E.M. on special order
- Also available in Solid State (Hall Effect) format on special order. Contact office for specifications
- AirVal models available (See “Classic - Pneumatic AirVal” on page 71 for details)
- Heavy gauge steel guard available (See “Accessories - Guards” on pages 94 & 95 for details)



Size (HxWxD):	1.68 x 3.25 x 5.39 In.
Weight:	1.13 lbs.

⚠ WARNING SEE PRODUCT WARNING ON PAGE 103						
SPECIFICATIONS (Special variations are available to the O.E.M. on special order on the models listed below)						
AGENCY APPROVALS	EN 60529 Degree of Protection	CATALOG NUMBER	DESCRIPTION	CIRCUIT	FORM	ELECTRICAL RATINGS
	IP20	77SN1	Momentary	SPDT	C	15 A 125-250 VAC 1/2 H.P. 125-250 VAC

EN 60529 Degree of Protection IP20 (IP68 Upon Request)

LOW POWER COMPACT DESIGN



Materials of Construction:

- Cast aluminum body painted black
- Cast aluminum treadle and base plate with nonskid base pad
- Internal strain relief clamp accepts a wide range of cable sizes

Features & Benefits:

- Single stage momentary contact
- Versatility of this model makes it ideal for O.E.M. devices
- Clean lines and compact design with a modest cost

Options:

- Custom cordsets and modifications are available to the O.E.M. on special order.
- Also available in Solid State (Hall Effect) format on special order. Contact office for specifications
- Heavy gauge steel guard available (See "Accessories - Guards" on pages 94 & 95 for details)

⚠ WARNING THE CLASSIC REED IS A LOW POWER DEVICE AND MUST BE USED ONLY IN THOSE APPLICATIONS WHERE SUITABLE DESIGN CONSTRAINTS AND SAFETY PRECAUTIONS ARE MET. CONTACT PROTECTION IS RECOMMENDED IF INDUCTIVE OR HIGH VOLTAGE LOADS ARE SWITCHED. PROPER SNUBBER NETWORKS ARE REQUIRED. HIGH INRUSH CURRENT, DAMAGING TO THE CONTACTS MAY BE PRESENT WHEN SWITCHING TUNGSTEN FILAMENT BULBS OR THROUGH WIRE OF SUFFICIENT LENGTH TO INTRODUCE STORED CAPACITANCE.

Size (HxWxD):	1.68 x 3.25 x 5.39 In.
Weight:	1.13 lbs.

⚠ WARNING SEE PRODUCT WARNING ON PAGE 103						
SPECIFICATIONS (Special variations are available to the O.E.M. on special order on the models listed below)						
AGENCY APPROVALS	EN 60529 Degree of Protection	CATALOG NUMBER	DESCRIPTION	CIRCUIT	FORM	ELECTRICAL RATINGS
	IP20	77SN9P ¹	Momentary	SPST-N.O. Grounded	A	500 MA 120 VAC 100 VDC 10 Watts Max.

¹6 ft. 18/3 SVT without plug.

NEMA TYPE 1, 2, 4, 6, 6P & 13
UL Enclosure 1, 2, 4, 6, 6P & 13
EN 60529 Degree of Protection IP68
Meets IEC 60601-2-2

Dust tight • Watertight • Oil tight • Corrosion Resistant
MILITARY GRADE DESIGN



Materials of Construction:

- Rugged aluminum casting is painted gray
- Piston type actuator sealed with O-rings
- 1/2"-14 N.P.T. threaded conduit entry.

Features & Benefits:

- Electrical contacts are sealed in a “well”
- Corrosion resistant housing & components
- 3 mounting holes provided for rigid mounting to floor or equipment

Options:

- Non-skid basepads available
- Custom colors - Special Order

Size (HxWxD):	2.22 x 4.28 x 7.00 In.
Weight:	2.73 lbs.

▲ WARNING SEE PRODUCT WARNING ON PAGE 103 SPECIFICATIONS (Special variations are available to the O.E.M. on special order on the models listed below)							
AGENCY APPROVALS	EN 60529 Degree of Protection	CATALOG NUMBER	DESCRIPTION	NATIONAL STOCK NUMBER	CIRCUIT	FORM	ELECTRICAL RATINGS
	IP68	WP-541-SC	Momentary	5930-00-833-7090	SPDT	C	20 A 125-250 VAC 1 H.P. 125-250 VAC 10 A 28 VDC 1/2 A 125 VDC 1/4 A 250 VDC
	IP68	WP-541-DC	Maintained	5930-00-421-3217	SPDT	C	15 A 125 VAC 10 A 250 VAC

EN 60529 Degree of Protection IP20 (IP68 Upon Request)

Splash Resistant • Corrosion Resistant (Available)
MEDIUM DUTY GENERAL PURPOSE DESIGN

Materials of Construction:

- Constructed of Cast Iron for long life
- Non-skid base pad
- Adjustable Strain relief connector
- Durable black finish
- Model 632-DA can be used to control lighting
- Model 638-S features a cast aluminum housing painted Alert Orange with a splash resistant interior switch



Features & Benefits:

- Proven Reliability
- All maintained models offer “Push On-Push Off” action that insures long trouble-free performance
- 2 holes provided for rigid mounting to floor or equipment

Options:

- The wide treadle models offer a large seven inch target for the operator’s foot (See “Clipper - Twin & Wide Treadle” on page 46 for details)
- Available protective vinyl cover that can be applied over our Clipper. This boot is available only in bright orange, and provides additional protection to the foot switch from limited amounts of liquid, dust, dirt, mud and snow (See “Accessories - Protective Boot” on page 95 for details)
- AirVal models available (See “Clipper - Pneumatic AirVal” on page 68 for details)
- Heavy gauge steel guard available (See “Accessories - Guards” on pages 94 & 95 for details)

Size (HxWxD):	1.78 x 3.45 x 4.56 In.
Weight:	2.25 lbs.

⚠ WARNING SEE PRODUCT WARNING ON PAGE 103						
SPECIFICATIONS (Special variations are available to the O.E.M. on special order on the models listed below)						
AGENCY APPROVALS	EN 60529 Degree of Protection	CATALOG NUMBER	DESCRIPTION	CIRCUIT	FORM	ELECTRICAL RATINGS
UL, CE, CEE	IP20	632-S	Momentary	SPDT	C	20 A 125-250 VAC 1 H.P. 125-250 VAC
UL, SF	IP20	632-SC3 ¹	Momentary	SPST Wired N.O.	A	15 A 125 VAC 3/4 H.P. 125 VAC
UL, SF, CE	IP20	632-SC36 ⁴	Momentary	SPST Wired N.O.	A	10 A 125-250 VAC 1/2 H.P. 125-250 VAC
UL, SF	IP20	632-DC3A ¹	Maintained	SPDT Wired N.O.	C	15 A 125 VAC 3/4 H.P. 125 VAC
UL, CE	IP20	633-S	Momentary	SPDT DB ³	Z	20 A 125-250 VAC 3/4 H.P. 125 VAC 1 H.P. 250 VAC
UL, CE	IP20	635-S	Momentary	DPDT	C	15 A 125 VAC 10 A 250 VAC
UL, CE	IP20	636-S	Two Stage Momentary	Each Stage SPDT	C	1/2 H.P. 125-250 VAC
UL, SF, CE	IP20	632-DA	Maintained	SPDT	C	20 A 125 VAC 10 A 250 VAC 1 1/2 H.P. 120-240 VAC
UL, CE	IP20	634-DA	Maintained	DPDT	C	10 A 125-250 VAC 1/8 H.P. 125 VAC 1/4 H.P. 250 VAC
UL, CE	IP21	638-S	Momentary	SPDT	C	10 A 125-250 VAC 1/2 H.P. 125-250 VAC
UL, CE	IP21	638-SC38 ²	Momentary	SPDT Wired N.O.	A	10 A 125-250 VAC 1/2 H.P. 125-250 VAC

¹Supplied with 8 ft. 14/3 cord and 3 prong series plug. Green lead grounded. ²Supplied with 8 ft. 16/3 cord, wired N.O. with green lead grounded.
³DB Double Break models must be wired to equal voltage sources and the same polarity. The loads should be on the same sides of the line. ⁴Supplied with 6 ft. 18/3 cord.

Clipper - Twin & Wide Treadle



EN 60529 Degree of Protection IP20 (IP68 Upon Request)

Splash Resistant (Available)

MEDIUM DUTY GENERAL PURPOSE DESIGN

Materials of Construction:

- Constructed of Cast Iron for long life
- Non-skid base pad
- Adjustable Strain relief connector
- Durable black finish
- Model 642-DA can be used to control lighting

Features & Benefits:

- Proven Reliability
- All maintained models offer “Push On-Push Off” action that insures long trouble-free performance
- Wide Treadle Models have 2 holes provided for rigid mounting to floor or equipment
- Twin Models have 4 holes provided for rigid mounting to floor or equipment
- Divider Bar on Twin Models aids in Reducing Accidental Operation of Multiple Pedals at Once

Options:

- The wide treadle models offer a large seven inch target for the operator’s foot
- Aluminum housing available for Twin Models
- AirVal models available (See “Clipper Twin & Wide Treadle - Pneumatic AirVal” on page 69 for details)
- Heavy gauge steel guard available (See “Accessories - Guards” on pages 94 & 95 for details)



Twin	
Size (HxWxD):	1.87 x 8.38 x 4.54 In.
Weight:	5.00 lbs.
Wide Treadle	
Size (HxWxD):	1.78 x 7.00 x 5.50 In.
Weight:	3.63 lbs.

⚠ WARNING SEE PRODUCT WARNING ON PAGE 103 SPECIFICATIONS (Special variations are available to the O.E.M. on special order on the models listed below)						
AGENCY APPROVALS	EN 60529 Degree of Protection	CATALOG NUMBER	DESCRIPTION	CIRCUIT	FORM	ELECTRICAL RATINGS
UL, S, CE	IP20	TWIN 632-S	Twin / Momentary	Each Side SPDT	C	20 A 125-250 VAC 1 H.P. 125-250 VAC
e, UL, US, CE	IP20	TWIN 635-S	Twin / Momentary	Each Side DPDT	C	15 A 125 VAC 10 A 250 VAC 1/2 H.P. 125-250 VAC
S, UL, S, CE	IP20	642-S	Wide Treadle / Momentary	SPDT	C	20 A 125-250 VAC 1 H.P. 125-250 VAC
e, UL, US, CE	IP20	643-S	Wide Treadle / Momentary	SPDT DB ¹	Z	20 A 125-250 VAC 3/4 H.P. 125 VAC 1 H.P. 250 VAC
e, UL, US, CE	IP20	645-S	Wide Treadle / Momentary	DPDT	C	15 A 125 VAC 10 A 250 VAC
e, UL, US, CE	IP20	646-S	Wide Treadle / Momentary 2-Stage	Each Stage SPDT	C	1 1/2 H.P. 120-240 VAC
S, UL, S, CE	IP20	642-DA	Wide Treadle / Maintained	SPDT	C	20 A 125 VAC 10 A 250 VAC 1 1/2 H.P. 120-240 VAC

¹DB Double Break models must be wired to equal voltage sources and the same polarity. The loads should be on the same sides of the line.

EN 60529 Degree of Protection IP65 (IP68 Upon Request)

**Splash Resistant • Corrosion Resistant (Available)
MEDIUM DUTY GENERAL PURPOSE DESIGN**

Materials of Construction:

- Constructed of zinc die cast
- Non-skid base pad
- Durable black finish
- Integral adjustable strain relief clamp
- Operating Temperature Range: -20 degrees C to +80 degrees C (-4 degrees F to +176 degrees F)
- 1/2" - 14 NPT Conduit Entry

Features & Benefits:

- Proven Reliability
- 2 holes provided (2.875" center - to - center) for rigid mounting to floor or equipment
- Gasket seal provides superior protection from liquids
- Stainless steel exterior hardware
- Steel actuating mechanism
- Passivated stainless steel springs

Options:

- Heavy gauge steel guard available on special order
- Cabled variations available



Single	
Size (HxWxD):	2.13 x 3.50 x 5.61 In.
Weight:	2.50 lbs.
Twin	
Size (HxWxD):	2.25 x 8.50 x 5.61
Weight:	4.63 lbs.

⚠ WARNING SEE PRODUCT WARNING ON PAGE 103						
SPECIFICATIONS (Special variations are available to the O.E.M. on special order on the models listed below)						
AGENCY APPROVALS	EN 60529 Degree of Protection	CATALOG NUMBER	DESCRIPTION	CIRCUIT	FORM	ELECTRICAL RATINGS
	IP65	911-SZ	Momentary	SPDT	C	20 A 125-250 VAC 1 H.P. 125-250 VAC
	IP65	911-SC3Z ¹	Momentary	SPDT	C	15A 125 VAC 1 H.P. 125 VAC
	IP65	TWIN 911-SZ	Momentary	SPDT Each Side	C	20 A 125-250 VAC 1 H.P. 125-250 VAC

¹Supplied with 8 ft. 14/3 cord and 3 prong series plug. Green lead grounded.

EN 60529 Degree of Protection IP20 (IP68 Upon Request)

Splash Resistant (Available)

LOW PROFILE ERGONOMIC DESIGN

Materials of Construction:

- Constructed of cast aluminum cover and base
- Provided with a reversible strain relief clamp that accommodates a wide range of cable sizes
- Painted black

Features & Benefits:

- The low, sleek styling of this model reduces operator fatigue
- Nonskid base pads

Options:

- 24" wide version available on special order
- AirVal Models available on special orders



Size (HxWxD):	1.47 x 3.25 x 5.53 In.
Weight:	1.00 lbs.

⚠ WARNING SEE PRODUCT WARNING ON PAGE 103						
SPECIFICATIONS (Special variations are available to the O.E.M. on special order on the models listed below)						
AGENCY APPROVALS	EN 60529 Degree of Protection	CATALOG NUMBER	DESCRIPTION	CIRCUIT	FORM	ELECTRICAL RATINGS
	IP20	121-S	Momentary	SPDT	C	20 A 125-250 VAC 1 H.P. 125-250 VAC
	IP20	124-S	Momentary	DPDT	C	15 A 125-250 VAC 1/2 H.P. 125-250 VAC

EN 60529 Degree of Protection IP20 (IP68 Upon Request)

Waterproof (Available)

LARGE LOW PROFILE ERGONOMIC DESIGN

Materials of Construction:

- Constructed of Cast Aluminum
- Painted gray

Features & Benefits:

- The parabolic curvature of the cover makes the Deluxe easy to operate without fatigue
- Full nonskid base pad

Options:

- Twin and triple models available - special order
- Guarding available contact Linemaster for details



Size (HxWxD):	1.71 x 4.91 x 5.44 In.
Weight:	1.00 lbs.

⚠ WARNING SEE PRODUCT WARNING ON PAGE 103						
SPECIFICATIONS (Special variations are available to the O.E.M. on special order on the models listed below)						
AGENCY APPROVALS	EN 60529 Degree of Protection	CATALOG NUMBER	DESCRIPTION	CIRCUIT	FORM	ELECTRICAL RATINGS
us	IP20	81-S	Momentary	SPDT	C	10 A 125-250 VAC
us	IP20	85-S	Two Stage Momentary	Each Stage SPDT	C	1/2 H.P. 125-250 VAC

EN 60529 Degree of Protection IP20 (IP68 Upon Request)

LARGE LOW PROFILE MULTI-FUNCTION DESIGN

Materials of Construction:

- Cover is molded from medium gray high impact polymeric material
- Base and treadles are made of a die cast zinc
- The cover tapers close to the floor in the front with a full five inches between the side treadle bars
- A Non-skid base pad provides a secure placement
- This multi-pedal foot switch should be considered when function, good looks and economy are required
- It incorporates a unique building block approach that allows the use of up to four basic SPDT snap switches
- SPECIAL VARIATIONS are available to the O.E.M. Special modifications include custom cordsets, nameplates, two stage operation, non operative cover, special circuits and a special translucent molded vinyl cover for added environmental protection against limited amounts of water and dirt
- Switch cover actuates separate function

Features & Benefits:

- Treadles are made of a die cast metal
- The cover tapers close to the floor in the front with a full five inches between the side treadle bars
- A Non-skid base pad provides a secure placement
- Supplied with internal adjustable Strain Relief for cord

Options:

- SPECIAL VARIATIONS are available to the O.E.M. Special modifications include custom cordsets, nameplates, two stage operation, non operative cover, special circuits and a special translucent molded vinyl cover for added environmental protection against limited amounts of water and dirt
- Available protective vinyl cover that can be applied over our Deluxe II. This cover is available only in Semi-clear, and provides additional protection to the foot switch from limited amounts of liquid, dust, dirt, mud and snow



Size (HxWxD):	1.67 x 6.87 x 5.64 In.
Weight:	2.00 lbs.

NOTE:

The translucent vinyl cover is made by a dip molding process. Minor cosmetic imperfections and blemishes are inherent in dip molded parts and must be expected. However, the basic environmental protection afforded is not affected.

⚠ WARNING SEE PRODUCT WARNING ON PAGE 103							
SPECIFICATIONS (Special variations are available to the O.E.M. on special order on the models listed below)							
AGENCY APPROVALS	EN 60529 Degree of Protection	CATALOG NUMBER	DESCRIPTION	PEDALS	CIRCUIT	FORM	ELECTRICAL RATINGS
	IP20	68-S3	Dual Treadle / Momentary	2 Pedals plus Cover	SPDT	C	10 A 125-250 VAC 1/2 H.P. 125-250 VAC
	IP20	68-S3N	Dual Treadle / Momentary	2 Pedals ¹	SPDT	C	
	IP20	68-S4N	Dual Treadle / Momentary	2 Pedals ¹	DPDT	C	
	IP20	68-S2	Single Treadle / Momentary	1 Pedal plus Cover	SPDT	C	

¹Cover non-operative with side treadle bars active.



PATENTED

Aquiline® Momentary - Polymeric

EN 60529 Degree of Protection IP20 (IP68 Upon Request)

971-SWNO210 & 971-SWNO210A are NEMA Type 1, 4X, 6 & 6P – UL Enclosure 1, 4X, 6 & 6P, and IP68

Watertight • Corrosion Resistant (Available)

VERSATILE COMPACT DESIGN

Materials of Construction:

- SPDT, DPDT, Two-Stage, Momentary Operation
- Rustproof and corrosion proof polymeric material
- Raised ribs on treadle for positive traction during operation
- Integrated adjustable strain relief clamp accommodates cord sizes from .250 Dia. to .400 Dia.

Features & Benefits:

- Flame retardant to 94-VI
- Maximum versatility, total performance
- Non-skid base pad
- 2 holes provided for rigid mounting to Floor or equipment

Options:

- Custom colors, and color matching available with quantity orders
- Private Labeling
- Accessory base units available for configurations using multiple switches
- Stainless steel full guard (single) 522-K26 available (See “Accessories - Guards” on page 95 for details)
- Supplied with Series Plug (See “Stock Cordsets with Molded Plug” on page 96 for details) unless otherwise noted
- Special variations built to functional customers’ specifications are available on special order. Custom paint finishes, cordsets, nameplates and multi-pedal versions are available. Please contact LINEMASTER® for additional information
- Heavy gauge steel guard available (See “Accessories - Guards” on pages 94 & 95 for details)



Polymeric - Single

Size (HxWxD):	1.09 x 3.44 x 4.00 In.
Weight:	3.60 oz.

WARNING SEE PRODUCT WARNING ON PAGE 103

SPECIFICATIONS (Special variations are available to the O.E.M. on special order on the models listed below)

AGENCY APPROVALS	EN 60529 Degree of Protection	CATALOG NUMBER	DESCRIPTION	COLOR	CIRCUIT	FORM	ELECTRICAL RATINGS
	IP20	971-S	Polymeric / Momentary	Dark Gray	SPDT	C	15 A 125-250 VAC 1/2 H.P. 125-250 VAC
	IP20	971-SA	Polymeric / Momentary	Light Gray	SPDT	C	
	IP20	971-SB	Polymeric / Momentary	Blue	SPDT	C	
	IP20	971-SO	Polymeric / Momentary	Orange	SPDT	C	
	IP20	971-SY	Polymeric / Momentary	Yellow	SPDT	C	
	IP20	974-S	Polymeric / Momentary	Dark Gray	DPDT	C	15 A 125-250 VAC 1/2 H.P. 125-250 VAC
	IP20	974-SA	Polymeric / Momentary	Light Gray	DPDT	C	
	IP68	971-SWNO210 ¹	Polymeric / Momentary	Dark Gray	SPST Wired N.O.	A	3 A 25 VAC
	IP68	971-SWNO210A ¹	Polymeric / Momentary	Light Gray	SPST Wired N.O.	A	
	IP20	971-SC26 ²	Polymeric / Momentary	Dark Gray	SPDT Wired N.O.	A	10 A 125-250 VAC 1/2 H.P. 125-250 VAC
	IP20	971-SC26A ²	Polymeric / Momentary	Light Gray	SPDT Wired N.O.	A	

¹Meets IP68 & is supplied with 10 ft. 18/2 cord without plug.

²Supplied with 6 ft. 18/2 cord without plug.

EN 60529 Degree of Protection IP20 (IP68 Upon Request)

**Corrosion Resistant
VERSATILE COMPACT DESIGN**

Materials of Construction:

- SPST, Maintained Operation
- Rustproof and corrosion proof reinforced polymeric material
- Raised ribs on treadle for positive traction during operation
- Integrated adjustable strain relief clamp accommodates cord sizes from .250 Dia. to .400 Dia.

Features & Benefits:

- Flame retardant to 94-VI
- Maximum versatility, total performance
- Non-skid base pad
- 2 holes provided for rigid mounting to Floor or equipment

Options:

- Custom colors, and color matching available with quantity orders
- Private Labeling
- Accessory base units available for configurations using multiple switches
- Stainless steel full guard (single) 522-K26 available (See “Accessories - Guards” on page 95 for details)
- Supplied with Series Plug (See “Stock Cordsets with Molded Plug” on page 96 for details) unless otherwise noted
- Special variations built to functional customers’ specifications are available on special order. Custom paint finishes, cordsets, nameplates and multi-pedal versions are available. Please contact LINEMASTER[®] for additional information
- Heavy gauge steel guard available (See “Accessories - Guards” on pages 94 & 95 for details)



Polymeric - Single	
Size (HxWxD):	1.09 x 3.44 x 4.00 In.
Weight:	3.60 oz.

⚠ WARNING SEE PRODUCT WARNING ON PAGE 8							
SPECIFICATIONS (Special variations are available to the O.E.M. on special order on the models listed below)							
AGENCY APPROVALS	EN 60529 Degree of Protection	CATALOG NUMBER	DESCRIPTION	COLOR	CIRCUIT	FORM	ELECTRICAL RATINGS
	IP20	971-DJ	Polymeric / Maintained	Dark Gray	SPST-NO	A	12 A 1 H.P. 250 VAC 1/2 H.P. 125 VAC
	IP20	971-DC3J ¹	Polymeric / Maintained	Dark Gray	SPST-NO	A	
	IP20	971-DC26J ²	Polymeric / Maintained	Dark Gray	SPST-NO	A	
	IP20	971-DC28J ³	Polymeric / Maintained	Dark Gray	SPST-NO	A	

¹Supplied with 8 ft. 16/3 cord with 3 prong series plug (Restricts use of foot switch assembly to 125 VAC Only). Plastic model is not grounded.
²Supplied with 6 ft. 16/2 cord, no ground.
³Supplied with 8 ft. 16/2 cord, no ground.



PATENTED

EN 60529 Degree of Protection IP20

VERSATILE COMPACT DESIGN

Materials of Construction:

- SPDT, DPDT, Two-Stage, Momentary or Maintained Operation
- Rustproof and corrosion proof cast zinc cover and formed steel base
- Raised ribs on treadle for positive traction during operation
- Integrated adjustable strain relief clamp accommodates cord sizes from .250 Dia. to .400 Dia.

Features & Benefits:

- Maximum versatility, total performance
- Non-skid base pad
- 2 holes provided for rigid mounting to Floor or equipment
- Twin model has Electrical Interlock feature

Options:

- Custom colors, and color matching available with quantity orders
- Private Labeling
- Accessory base units available for configurations using multiple switches
- Stainless steel full guard (single) 522-K26 available (See “Accessories - Guards” on page 95 for details)
- Supplied with Series Plug (See “Stock Cordsets with Molded Plug” on page 96 for details) unless otherwise noted
- Special variations built to functional customers’ specifications are available on special order. Custom paint finishes, cordsets, nameplates and multi-pedal versions are available. Please contact us for additional information
- Heavy gauge steel guard available (See “Accessories - Guards” on pages 94 & 95 for details)
- For Medical multi switch options see page 13 for details



Single	
Size (HxWxD):	1.09 x 3.44 x 4.00 In.
Weight:	1.00 lb.
Twin	
Size (HxWxD):	1.25 x 7.547 x 5.562
Weight:	4.45 lbs.

⚠ WARNING SEE PRODUCT WARNING ON PAGE 103							
SPECIFICATIONS (Special variations are available to the O.E.M. on special order on the models listed below)							
AGENCY APPROVALS	EN 60529 Degree of Protection	CATALOG NUMBER	DESCRIPTION	COLOR	CIRCUIT	FORM	ELECTRICAL RATINGS
	IP20	971-DJM	Die Cast Zinc / Maintained	Black	SPST-NO	A	12 A 1 H.P. 250 VAC 1/2 H.P. 125 VAC
	IP20	971-DC3JM ¹	Die Cast Zinc / Maintained	Black	SPST-NO	A	
	IP20	971-DC36JM ²	Die Cast Zinc / Maintained	Black	SPST-NO	A	
	IP20	971-DC38JM ³	Die Cast Zinc / Maintained	Black	SPST-NO	A	
	IP20	971-SM	Die Cast Zinc / Momentary	Black	SPDT	C	15 A 125-250 VAC 1/2 H.P. 125-250 VAC
	IP20	972-S	Die Cast Zinc / Momentary 2-Stage	Black	SPDT Each Stage	C	
	IP20	974-SM	Die Cast Zinc / Momentary 2-Stage	Black	DPDT Each Stage	C	
	IP20	TWIN 971-SMC48 ⁴	Die Cast Zinc / Momentary	Black	SPDT Wired N.O.	A	13 A 125-250 VAC 1/2 H.P. 125-250 VAC

¹Supplied with 8 ft. 16/3 cord with 3 prong series plug (Restricts use of foot switch assembly to 125 VAC Only). Plastic model is not grounded.

²Supplied with 6 ft. 16/3 cord, grounded. ³Supplied with 8 ft. 16/3 cord, grounded. ⁴Supplied with 8' 16/4 cord without plug. Green lead grounded.

EN 60529 Degree of Protection IP20

Splash Resistant (Available Momentary Only)
VERSATILE COMPACT DESIGN

Materials of Construction:

- Steel housing is painted Black
- Metal Mounting Plate spot welded to base on 491-SC36MP
- Twin Baseplate formed from cast aluminum
- The two pedal model is supplied with a divider bar between pedals which helps prevent accidental operation of both pedals at one time

Features & Benefits:

- Momentary & Maintained Models Non-Skid base pad for secure placement
- Compact in size and light in weight
- Supplied with internal adjustable strain relief
- Built for long life
- 2 Mounting Holes for Rigid Mounting to Floor or Equipment

Options:

- Rectangular mounting bracket is available for Compact models on special order. Bracket comes spot-welded to switch base and has two clearance holes for mounting
- Heavy gauge steel guard available (See "Accessories - Guards" on pages 94 & 95 for details)
- Airval models available (See "Compact Pneumatic Airval" on page 70 for details)



Single	
Size (HxWxD):	1.28 x 2.50 x 2.87 In.
Weight:	7.00 oz.
Twin	
Size (HxWxD):	1.46 x 5.98 x 2.875 In.
Weight:	1.25 lbs.
Mounting Bracket Model	
Size (HxWxD):	1.28 In. x 3.50 x 2.87 In.
Weight:	1.05 lbs.

⚠ WARNING SEE PRODUCT WARNING ON PAGE 103

SPECIFICATIONS (Special variations are available to the O.E.M. on special order on the models listed below)

AGENCY APPROVALS	EN 60529 Degree of Protection	CATALOG NUMBER	DESCRIPTION	CIRCUIT	FORM	ELECTRICAL RATINGS
	IP20	491-S	Single / Momentary	SPDT	C	10 A 125-250 VAC 1/2 H.P. 125-250 VAC
	IP20	491-SC36 ²	Single / Momentary	SPDT Wired N.O.	A	10 A 125 VAC 1/2 H.P. 125 VAC
	IP20	491-SC3 ¹	Single / Momentary	SPDT Wired N.O.	A	20 A 125-250 VAC 1 H.P. 125-250 VAC
	IP20	492-S	Single / Momentary	SPDT	C	10 A 125-250 VAC 1/2 H.P. 125-250 VAC
	IP20	TWIN 491-S	Twin / Momentary	SPDT - Each Side	C	10 A 125-250 VAC 1/2 H.P. 125-250 VAC
	IP20	491-SC36MP ²	Single / Momentary with Mounting Plate	SPDT Wired N.O.	A	10 A 125-250 VAC 1/2 H.P. 125-250 VAC

¹Supplied with 6 ft. 16/3 cord with 3 prong series plug. Green lead grounded. ²Supplied with 6 ft. 18/3 cord without plug. Green lead grounded.

EN 60529 Degree of Protection IP20

Splash Resistant (Available Momentary Only)
VERSATILE COMPACT DESIGN

Materials of Construction:

- Zinc die-cast cover and base
- Black Powder-Coat paint finish
- Plastic base and cover inserts for insulation
- 18 Gauge, 8 foot cable on select models

Features & Benefits:

- Non-Skid base pad for secure placement
- Larger foot print and heavier than the original Compact
- Supplied with internal adjustable strain relief
- Built for long life
- 2 Mounting Holes for Rigid Mounting to Floor or Equipment

Options:

- Rectangular mounting bracket is available for Compact models on special order. Easy to assemble.
- Heavy gauge steel guard available (See “Accessories - Guards” on pages 94 & 95 for details)
- 25 Amp option available
- Plastic Cover Available
- IP68 (Waterproof) option available.



Single	
Size (HxWxD):	1.42 x 2.76 x 3.15 In.
Weight:	11.00 oz

▲ WARNING SEE PRODUCT WARNING ON PAGE 103						
SPECIFICATIONS (Special variations are available to the O.E.M. on special order on the models listed below)						
AGENCY APPROVALS	EN 60529 Degree of Protection	CATALOG NUMBER	DESCRIPTION	CIRCUIT	FORM	ELECTRICAL RATINGS
	IP20	811-SZ	Single / Momentary	SPDT	C	20 A 125/250 VAC 1 1/2 H.P. 125 VAC; 2 H.P. 250 VAC
	IP20	811-SC3Z ¹	Single / Momentary	SPDT Wired N.O.	A	10 A 1/2 H.P. 125 VAC
	IP20	811-SC36Z ²	Single / Momentary	SPDT Wired N.O.	A	10 A 1/2 H.P. 125/250 VAC

¹Supplied with 8 ft. 18/3 cord with 3 prong series plug. ²Supplied with 8 ft. 18/3 cord without plug. Green lead grounded.

EN 60529 Degree of Protection IP20 (IP68 Upon Request)

Splash Resistant (Available) LIGHT DUTY COMPACT DESIGN

Materials of Construction:

- Strong steel housing is painted black
- Two single models mounted on a steel base
- A divider bar between pedals which helps prevent accidental operation of both switches at one time
- All wiring between the two switches is concealed

Features & Benefits:

- Nonskid base pad
- Designed to give a long economical service life
- Only one cord is brought out the right side eliminating the need for wire junctions & reducing wiring costs

Options:

- Triple Models Available
- Heavy gauge steel guard available (See “Accessories - Guards” on pages 94 & 95 for details)
- Rectangular mounting bracket is available for Hi-Treadlite models on special order
- Bracket comes spot-welded to switch base and has two clearance holes for mounting



Single	
Size (HxWxD):	1.37 x 2.625 x 3.56 In.
Weight:	10 oz.
Twin	
Size (HxWxD):	1.50 x 5.44 x 3.56 In.
Weight:	1.50 lbs.

⚠ WARNING SEE PRODUCT WARNING ON PAGE 8						
SPECIFICATIONS (Special variations are available to the O.E.M. on special order on the models listed below)						
AGENCY APPROVALS	EN 60529 Degree of Protection	CATALOG NUMBER	DESCRIPTION	CIRCUIT	FORM	ELECTRICAL RATINGS
	IP20	HT-52-S	Momentary	SPDT	C	20 A 125-250 VAC 1 H.P. 125-250 VAC
	IP20	HT-52-SC36 ¹	Momentary	SPST Wired N.O.	A	10 A 125-250 VAC 1/2 H.P. 125 VAC 1 H.P. 250 VAC
	IP20	TWIN HT-52-S	Momentary	SPDT - Each Side	C	20 A 125-250 VAC 1 H.P. 125-250 VAC

¹Supplied with 6 ft. 16/3 cord without plug. Green lead grounded.

EN 60529 Degree of Protection IP20 (IP68 Upon Request)

Drip tight • Dust tight • Watertight (Available)
COMPACT VERSATILE LOW PROFILE DESIGN

Materials of Construction:

- Steel housing is painted black
- Two single models mounted on a twin base plate with or without wiring channel
- A divider bar between pedals which helps prevent accidental operation of both switches at one time

Features & Benefits:

- Nonskid base pad and foot treadle pad
- 2 Holes provided for rigid mounting to floor or equipment
- The low profile and light pressure required to operate reduces operator fatigue

Options:

- Special Twin, Triple & Quad baseplates with wiring channel available on special order
- Stainless Steel Model Available (See Treadlite II - Stainless Steel” on page 58 for details)
- Mounting Plate Available
- Heavy gauge steel guard available (See “Accessories - Guards” on pages 94 & 95 for details)



WARNING THE T-91-PS and T-91-PSNC ARE LOW POWER DEVICES AND MUST BE USED ONLY IN THOSE APPLICATIONS WHERE SUITABLE DESIGN CONSTRAINTS AND SAFETY PRECAUTIONS ARE MET.

Single		Twin Without Wire Channel	
Size (HxWxD):	1.00 x 2.63 x 3.50 In.	Size (HxWxD):	1.48 x 6.12 x 3.56 In.
Weight:	7.00 oz.	Weight:	1.50 lbs.
Twin with Wire Channel			
Size (HxWxD):	1.38 In. x 7.94 x 5.56		
Weight:	4.00 lbs.		

WARNING SEE PRODUCT WARNING ON PAGE 103

SPECIFICATIONS (Special variations are available to the O.E.M. on special order on the models listed below)

AGENCY APPROVALS	EN 60529 Degree of Protection	CATALOG NUMBER	DESCRIPTION	CIRCUIT	FORM	ELECTRICAL RATINGS
	IP20	T-91-S	Single / Momentary	SPDT	C	15 A 125-250 VAC 1/2 H.P. 125-250 VAC
	IP20	TWIN T-91-S ⁹	Single / Momentary	SPDT Each Side	C	15 A 125-250 VAC 1/2 H.P. 125-250 VAC
	IP20	T-91-SC36 ¹	Single / Momentary	SPDT Wired N.O.	A	10 A 125-250 VAC 1/2 H.P. 125-250 VAC
	IP20	T-91-SCEA ⁷	Single / Momentary	SPDT Wired N.O.	A	15 A 125-250 VAC 1/2 H.P. 125-250 VAC
	IP20	T-91-SC36A ²	Single / Momentary	SPDT Wired N.O.	A	15 A 125-250 VAC 1/2 H.P. 125-250 VAC
	IP20	T-91-SC3 ⁴	Single / Momentary	SPDT Wired N.O.	A	10 A 125 VAC 1/2 H.P. 125 VAC
	IP20	T-91-SC3A ⁵	Single / Momentary	SPDT Wired N.O.	A	15 A 125 VAC 1/2 H.P. 125 VAC
	IP20	T-91-PS ⁶	Single / Momentary	SPDT Wired N.O.	A	3 A 30 VAC Max. Class 2 Circuits Only
	IP20	T-91-PSNC ⁶	Single / Momentary	SPDT Wired N.C.	B	3 A 30 VAC Max. Class 2 Circuits Only
	IP20	T-91-SCE ⁸	Single / Momentary	SPDT Wired N.O.	A	16 A 125-250 VAC 1/2 H.P. 125-250 VAC
	IP20	T-91-SE	Single / Momentary	SPDT	C	15 A 125-250 VAC 1/2 H.P. 125-250 VAC
	IP20	TWIN T-91-SC48 ³	Twin / Momentary	SPDT Wired N.O. Both Sides	A	13 A 125-250 VAC 1/2 H.P. 125-250 VAC

¹Supplied with 6 ft. 18/3 cord without plug. Green lead grounded. ²Supplied with 6 ft. 14/3 cord without plug. Green lead grounded. ³Two T-91-S models mounted on a common steel baseplate, with a wiring channel & supplied with 8 ft. 16/4 cord without plug. Green lead grounded. ⁴Supplied with 6 ft. 18/3 cord with 3 prong series plug. Green lead grounded. ⁵Supplied with 8 ft. 14/3 cord with 3 prong series plug. Green lead grounded. ⁶Supplied with 8 ft. 22/1 audio cable with 2 contact .250 diameter phone plug, not grounded. ⁷Supplied with 2 meter 18/3 cord with brown, blue & green/yellow leads. ⁸Supplied with 2 meter 14/3 cord ⁹Two T-91-S models mounted on common cast aluminum base, no wiring Channel

Treadlite II - Stainless Steel



EN 60529 Degree of Protection IP68
NEMA Type 1, 4X, 6, & 6P IP68
UL Enclosure 1, 4X, 6, & 6P

Drip tight • Dust tight • Watertight • Corrosion Resistant (Available)
COMPACT VERSATILE LOW PROFILE DESIGN

Materials of Construction:

- Stainless Steel housing with brushed finish

Features & Benefits:

- Nonskid base pad and foot treadle pad
- The low profile and light pressure required to operate reduces operator fatigue

Options:

- Stainless Steel Full Guard Available
 (See “Accessories - Guards” on page 95 for details)



Size (HxWxD):	.85 x 2.63 x 3.50 In.
Weight:	8.00 oz.

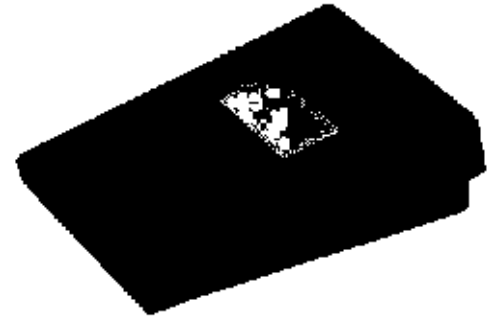
⚠ WARNING SEE PRODUCT WARNING ON PAGE 103						
SPECIFICATIONS (Special variations are available to the O.E.M. on special order on the models listed below)						
AGENCY APPROVALS	EN 60529 Degree of Protection	CATALOG NUMBER	DESCRIPTION	CIRCUIT	FORM	ELECTRICAL RATINGS
US	IP68	T-91-SWANOS ¹	Momentary	SPST-N.O.	A	3 A 125-250 VAC
US	IP68	T-91-SWANO3S ²	Momentary	SPST wired N.O.	A	3 A 125 VAC
US	IP68	T-91-SWANO38S ³	Momentary	SPST wired N.O.	A	3 A 125-250 VAC

¹Supplied without cordset.
²Supplied with 8 ft. 18/3 cord and 3-prong series plug, green lead grounded.
³Supplied with 8 ft. 18/3 cord without plug, green lead grounded.

EN 60529 Degree of Protection IP20 (IP68 Upon Request)

Splash Resistant • Corrosion Resistant (Available)

LIGHT DUTY GENERAL PURPOSE DESIGN



Materials of Construction:

- Steel Housing is painted black
- Ribbed rubber foot pad for traction
- Steel fasteners
- Non-skid base pad for traction on various surfaces
- Internal plastic strain relief connector

Features & Benefits:

- Proven Reliability
- 2 holes provided for rigid mounting to floor or equipment
- The low profile and light pressure required to operate reduces operator fatigue.
- Front Hinge position for ease of actuation.

Options:

- Heavy gauge steel guard available
- Cabled variations available
- Multipedal options available on special order.



Size (HxWxD):	1.18 x 2.89 x 3.60 In.
Weight:	7 oz. / 1 lb. Corded

⚠ WARNING SEE PRODUCT WARNING ON PAGE 103						
SPECIFICATIONS (Special variations are available to the O.E.M. on special order on the models listed below)						
AGENCY APPROVALS	EN 60529 Degree of Protection	CATALOG NUMBER	DESCRIPTION	CIRCUIT	FORM	ELECTRICAL RATINGS
	IP20	T-91-SFZ	Single / Momentary	SPDT	C	15 A 125-250 VAC 1/2 H.P. 125-250 VAC
	IP20	T-91-SC3FZ ¹	Single / Momentary	SPDT Wired N.O.	A	10 A 125 VAC 1/2 H.P. 125 VAC
	IP20	T-91-SC36FZ ²	Single / Momentary	SPDT Wired N.O.	A	10 A 125 VAC 1/2 H.P. 125 VAC

¹ Supplied with 6 ft. 18/3 cord with 3 prong series plug. Green lead grounded.
² Supplied with 6 ft. 18/3 cord without plug. Green lead grounded.

NEMA Type 2, 4, 6 & 6P
EN 60529 Degree of Protection IP68
Meets IEC 60601-2-2

Drip tight • Dust tight • Watertight
HIGH IMPACT LOW PROFILE OMNI-DIRECTIONAL DESIGN

Materials of Construction:

- Actuation from any direction with moderate pressure
- The cover and base is molded in a high impact polymeric compound
- Base includes mounting provisions

Features & Benefits:

- Low profile to aide in elimination of fatigue
- A nonskid base pad
- Wired normally open, no ground

Options:

- Stainless Steel Weight Plate Available
- Custom Cable Available



⚠ WARNING INTENDED FOR INDOOR USE PRIMARILY TO PROVIDE A DEGREE OF PROTECTION AGAINST THE ENTRY OF WATER DURING OCCASIONAL TEMPORARY SUBMERSION AT A LIMITED DEPTH.

Size (DIA. X H):	3.50 x 1.00 In.
Weight:	9.00 oz.

⚠ WARNING SEE PRODUCT WARNING ON PAGE 103						
SPECIFICATIONS (Special variations are available to the O.E.M. on special order on the models listed below)						
AGENCY APPROVALS	EN 60529 Degree of Protection	CATALOG NUMBER	DESCRIPTION	CIRCUIT	FORM	ELECTRICAL RATINGS
cULus	IP68	D41-SNO28 ¹	Momentary	SPST Wired N.O.	A	5 A Resistive 125 VAC 28 VDC 3 A General Purpose 125 VAC
¹ Supplied with 8 ft. 18/2 cord without plug.						

EN 60529 Degree of Protection IP20 (IP68 Upon Request)

Splash Resistant (Available)

LARGE LOW PROFILE OMNI-DIRECTIONAL DESIGN

Materials of Construction:

- Round Nickel Chrome Cover
- Heavy Gauge Steel Base plate
- Stain resistant black nitrile Nonskid Base Pad
- The cable shroud provides additional flex protection for the cable

Features & Benefits:

- Designed for long life use
- Operates From Any Direction with moderate pressure
- Extended cable Flex Protection
- Cable shroud provides additional flex protection for cable
- The internal reversible cable clamp accepts a wide range of cable sizes

Options:

- Custom paint finish available on cover
- AirVal models available (See “Premier - Pneumatic AirVal” on page 66 for details)
- Linear models available contact Linemaster for details



Size (Dia. x H):	5.75 x 1.50 In.
Weight:	2.00 lbs.

⚠ WARNING SEE PRODUCT WARNING ON PAGE 103						
SPECIFICATIONS (Special variations are available to the O.E.M. on special order on the models listed below)						
AGENCY APPROVALS	EN 60529 Degree of Protection	CATALOG NUMBER	DESCRIPTION	CIRCUIT	FORM	ELECTRICAL RATINGS
cULus CE	IP20	P32-S	Momentary	SPDT	C	20 A 125-250 VAC 1 H.P. 125-250 VAC
cULus CE	IP20	P31-SC3 ¹	Momentary	SPDT Wired N.O.	A	10 A 125-250 VAC 1/2 H.P. 125-250 VAC
cULus CE	IP20	P31-SC36 ²	Momentary	SPDT Wired N.O.	A	

¹Supplied with 6 ft. 18/3 cord with 3 prong series plug. Green lead grounded. ²Supplied with 6 ft. 18/3 cord without plug. Green lead grounded.

NEMA Type 2 UL ENCLOSURE 2 (VK ONLY)
EN 60529 Degree of Protection IP21 (IP68 Upon Request)

Drip tight • Dust tight (VK ONLY) Corrosion Resistant
COMPACT OMNI-DIRECTIONAL DESIGN

Materials of Construction:

- Mounted in a chrome plated heavy zinc die cast housing
- A full nonskid base pad
- A special vinyl cover gives added environmental protection against limited amounts of water and dirt
- The dip molded cover is bonded to the vinyl base pad of the foot switch

Features & Benefits:

- Features a round black actuating cap
- Moderate pressure from any direction operates the switch
- Standard models supplied with cordset
- Wired normally open and grounded
- Ease of operation with foot or hand
- The cable entry boot is clinched tight to the cordset

Options:

- Special paint finish available
- Silk Screening available
- Special single wiring channel with or without side protectors available
- Twin version available
- Linear models available contact Linemaster for details
- European type foot switch is offered pre wired with 3 conductor cordset having brown, blue and green/yellow colored leads. It is a momentary contact and wired normally open with green/yellow lead grounded to switch base



V Series	
Size (Dia. x H):	3.81 x 1.30 In.
Weight:	1.00 lbs.
VK Series	
Size (Dia. x H):	5.06 x 1.57 In.
Weight:	1.50 lbs.

⚠ WARNING SEE PRODUCT WARNING ON PAGE 103						
SPECIFICATIONS (Special variations are available to the O.E.M. on special order on the models listed below)						
AGENCY APPROVALS	EN 60529 Degree of Protection	CATALOG NUMBER	DESCRIPTION	CIRCUIT	FORM	ELECTRICAL RATINGS
cUL _{US}	IP21	GEM-VK3 ¹	Momentary / Vinyl Cover	SPST Wired N.O.	A	10 A 125 VAC 1/2 H.P. 125 VAC
cUL _{US} CE	IP21	GEM-VK36 ²	Momentary / Vinyl Cover	SPST Wired N.O.	A	10 A 125-250 VAC 1/2 H.P. 125-250 VAC
cUL _{US} CE	IP20	GEM-VCEA ³	Momentary	SPST Wired N.O.	A	10 A 125-250 VAC 1/2 H.P. 125-250 VAC
cUL _{US} CE	IP20	GEM-V2	Momentary	SPDT	C	15 A 125-250 VAC 1/2 H.P. 125-250 VAC
cUL _{US}	IP20	GEM-V3 ¹	Momentary	SPST Wired N.O.	A	10 A 125 VAC 1/2 H.P. 125 VAC
cUL _{US} CE	IP20	GEM-V36 ²	Momentary	SPST Wired N.O.	A	10 A 125-250 VAC 1/2 H.P. 125-250 VAC

¹Supplied with 6 ft. 18/3 cord and 3 prong series plug. Green lead grounded. ²Supplied with 6 ft. 18/3 cord without plug. Green lead grounded.
³Supplied with 2 meter 18/3 brown, blue & green/yellow leads.

EN 60529 Degree of Protection IP20 (IP68 Upon Request)

Motion Control Device ROCKER ACTION LOW PROFILE DESIGN

Materials of Construction:

- Cover is a medium gray Die Cast Zinc material
- Mechanical Interlock—prevents both circuits from being operated at the same time
- Operates on the teeter-totter principle
Pressure on one side opens or closes line, release of pressure returns switch to normal off position, pressure on other side opens or closes circuit, independent of first

Features & Benefits:

- Non-skid Base pad
- Both sides can be wired normally open or normally closed
- All wiring connections are made internally with only a single cord being brought out
- Eliminates costly harness assemblies
- Offers real economy

Options:

- Twin, Triple, Quad & Quint versions available
- Heavy gauge steel guard available (See “Accessories - Guards” on pages 94 & 95 for details)
- Twin and Triple version guards available contact Linemaster for details



Size (HxWxD):	1.62 x 4.28 x 4.75 In.
Weight:	1.50 lbs.

⚠ WARNING SEE PRODUCT WARNING ON PAGE 103						
SPECIFICATIONS (Special variations are available to the O.E.M. on special order on the models listed below)						
AGENCY APPROVALS	EN 60529 Degree of Protection	CATALOG NUMBER	DESCRIPTION	CIRCUIT	FORM	ELECTRICAL RATINGS
c US	IP20	72	Momentary	SPDT Each Side	C	10 A 125-250 VAC
c US	IP20	74	Momentary	DPDT Each Side	C	1/2 H.P. 125-250 VAC

EN 60529 Degree of Protection IP20

Motion Control Device

ROCKER ACTION COMPACT DESIGN

Materials of Construction:

- Steel Housing
- Black finish
- Mechanical Interlock—prevents both circuits from being operated at the same time
- Operates on the teeter-totter principle
Pressure on one side opens or closes line, release of pressure returns switch to normal off position, pressure on other side opens or closes circuit, independent of first

Features & Benefits:


- Non-skid Base pad
- Both sides can be wired normally open or normally closed
- All wiring connections are made internally with only a single cord being brought out
- Eliminates costly harness assemblies
- Offers real economy

Options:

- Twin version available
- Multiple cable entry locations available
- Mounting provisions can be added
- Custom labeling
- Splash resistant interior switch available



Size (HxWxD):	1.21 x 2.75 x 5.00 In.
Weight:	10 oz.

⚠ WARNING SEE PRODUCT WARNING ON PAGE 103 SPECIFICATIONS (Special variations are available to the O.E.M. on special order on the models listed below)						
AGENCY APPROVALS	EN 60529 <small>Degree of Protection</small>	CATALOG NUMBER	DESCRIPTION	CIRCUIT	FORM	ELECTRICAL RATINGS
	IP20	L-2-S	Momentary	SPDT Each Side	C	10 A 125-250 VAC 1/2 H.P. 125-250 VAC



EN 60529 Degree of Protection IP20
UL available on Special Orders

Motion Control Device
HEAL-TO-TOE ROCKER ACTION DESIGN

Materials of Construction:

- Die cast Aluminum housing
- Black finish
- Mechanical Interlock—prevents both circuits from being operated at the same time
- Operates on the teeter-totter principle
 Pressure on one side opens or closes line, release of pressure returns switch to normal off position, pressure on other side opens or closes circuit, independent of first



Features & Benefits:

- Non-skid Base pad
- Housing is pivoted in the center for easy heal-toe operation
- Both sides can be wired normally open or normally closed
- All wiring connections are made internally with only a single cord being brought out
- Adjustable strain relief connector that accommodates a wide range of cable sizes
- Eliminates costly harness assemblies
- Offers real economy

Options:

- DPDT Available on Special Orders
- Available with UL approval

Size (HxWxD):	2.09 x 3.50 x 8.31 In.
Weight:	1.75 lbs.

⚠ WARNING SEE PRODUCT WARNING ON PAGE 103						
SPECIFICATIONS (Special variations are available to the O.E.M. on special order on the models listed below)						
AGENCY APPROVALS	EN 60529 Degree of Protection	CATALOG NUMBER	DESCRIPTION	CIRCUIT	FORM	ELECTRICAL RATINGS
N/A	IP20	476-S	Momentary	SPDT Each Side	C	15 A 125-250 VAC 1/2 H.P. 125-250 VAC