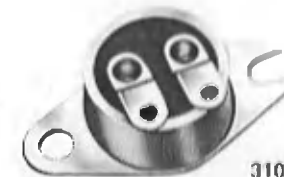




REDI-TEMP

UNIVERSAL THERMOSTATS SERIES 3100 SPST HERMETIC SERIES



3100

APPLICATIONS:

- Computers
- Medical Electronics
- Power Supplies
- Industrial Controls
- Test Equipment

SHIPPED FROM STOCK

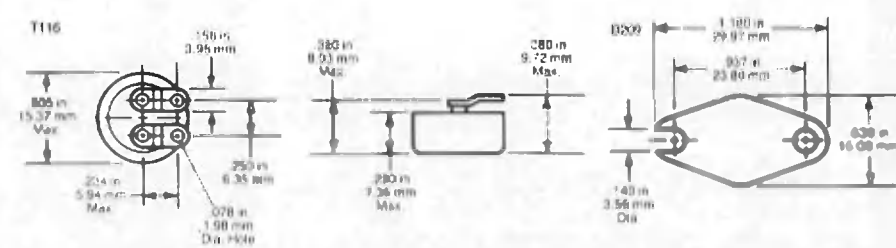
BENEFITS:

- Environmental Exposure -80° to 650°F (-62° to 288°C)
- U.L. Listings
- Single Contact (SPST)
- Pre-set and Tamperproof
- 100% Thermally and Mechanically Inspected
- Laser Welded Hermetic Seal

OPEN ON RISE

CLOSE ON RISE

OPEN ON RISE				CLOSE ON RISE				PART NUMBER	OPEN ON RISE				CLOSE ON RISE				PART NUMBER
OPEN	TEMP °F TOL +/-	CLOSE	TOL +/-	OPEN	TEMP °C TOL +/-	CLOSE	TOL +/-		CLOSE	TEMP °F TOL +/-	OPEN	TOL +/-	CLOSE	TEMP °C TOL +/-	OPEN	TOL +/-	
40	5	20	5	4	3	-7	3	3100U-3-1431	40	5	20	5	4	3	-7	3	3100U-3-1453
50	5	30	5	10	3	-1	3	3100U-3-1432	50	5	30	5	10	3	-1	3	3100U-3-1454
60	5	40	5	16	3	4	3	3100U-3-1433	60	5	40	5	16	3	4	3	3100U-3-1455
70	5	50	5	21	3	10	3	3100U-3-1434	80	5	60	5	27	3	16	3	3100U-3-1456
80	5	60	5	27	3	16	3	3100U-3-1435	100	5	80	5	38	3	27	3	3100U-3-1457
90	5	70	5	32	3	21	3	3100U-3-1436	120	5	100	5	48	3	38	3	3100U-3-1458
100	5	80	5	38	3	27	3	3100U-3-1437	140	5	120	5	80	3	49	3	3100U-3-1459
110	5	90	5	43	3	32	3	3100U-3-1438	160	5	140	5	71	3	60	3	3100U-3-1460
120	5	100	5	49	3	38	3	3100U-3-1439	180	5	160	5	82	3	71	3	3100U-3-1461
130	5	110	5	54	3	43	3	3100U-3-1440	200	5	180	5	93	3	82	3	3100U-3-1462
140	5	120	5	60	3	48	3	3100U-3-1441	220	6	195	5	104	4	91	5	3100U-3-1463
150	5	130	5	66	3	54	3	3100U-3-1442									
160	5	140	5	71	3	60	3	3100U-3-1443									
170	5	150	5	77	3	66	3	3100U-3-1444									
180	5	160	5	82	3	71	3	3100U-3-1445									
190	5	170	5	88	3	77	3	3100U-3-1446									
200	5	180	5	93	3	82	3	3100U-3-1447									
210	5	185	6	99	5	85	4	3100U-3-1448									
220	5	195	6	104	5	91	4	3100U-3-1449									
230	5	205	6	110	5	95	4	3100U-3-1450									
240	5	215	6	116	5	102	4	3100U-3-1451									
250	5	225	6	121	5	107	4	3100U-3-1452									



RATINGS - RESISTIVE (Non U.L.)

LIFE CYCLES	30 VAC/DC	120 VAC	240 VAC
5,000	7.0 AMPS	6.0 AMPS	3.0 AMPS
10,000	6.5 AMPS	5.0 AMPS	2.5 AMPS
25,000	6.0 AMPS	4.0 AMPS	2.0 AMPS
50,000	5.5 AMPS	3.0 AMPS	1.5 AMPS
100,000	5.0 AMPS	2.0 AMPS	1.0 AMPS

U.L. Ratings

LIFE CYCLES	120 VAC
6,000	6.0 AMPB
6,000	1/10 H.P.
100,000	3.0 AMPS

For a prompt response contact...



Sensing & Control
Elmwood Sensors, Inc.
 500 Narragansett Park Dr.
 Pawtucket, RI 02861
 TOLL-FREE 1-800-ELMWOOD (3569663)