

Model ZK

Pressure Digital Test Gauge



DESCRIPTION

The Model ZK digital pressure test gauge with 0.1 % reading accuracy uses transducer technology and a stainless steel diaphragm for high overpressure protection. The transducer technology provides enhanced accuracy over the entire pressure range. The ZK has no moving parts and thus, may provide a long life with fewer re-calibrations. The stainless steel NEMA construction also provides EMI and RFI protection. The ZK provides high resolution with an easy to read digital display. There are no operator errors due to interpolation of hash marks or parallax errors.

The Model ZKW is powered by one or two common 9 V alkaline batteries. The Model ZKT is powered by a 110 Vac adapter. The

Model ZKV is powered by an 11 Vdc to 32 Vdc power supply.

Each unit has a membrane face with raised buttons and tactile feedback for setup and operation. The high, low, and clear buttons are easily accessible on this front membrane. Zero adjustment and zero offset/tare functions are standard on each unit. Calibration and setup parameters are stored on a memory chip to protect from loss even when power is interrupted. Unauthorized set ups and calibrations are also blocked with internal security. Various combinations of the front panel buttons can be de-activated.

FEATURES

- 0.1 % of reading
- 0 °F to 180 °F operating temperature (with NEMA 4 rating)
- Calibration grade transducer
- Digitally enhanced temperature correction
- Stainless steel construction
- On/off switch
- CE compliant
- 9 V battery power
- High/low capture/store
- 4½ digit display with 0.5 in height
- Customer recalibration
- Zero offset/tare
- On/off switch disable feature
- Two programmable limits and relays (optional)
- NEMA 4 rating (optional)
- NIST traceable (optional)

Model ZK

PERFORMANCE SPECIFICATIONS

Characteristic	Measure
Accuracy	0.1 % reading from 20 % to 80 % of range
Pressure range 0 psi to	15, 50, 100, 200, 500, 750, 1000, 1500, 2000 psig
High and low capture	Standard
Update speed	Adjustable from three to ten times per sec

ENVIRONMENTAL SPECIFICATIONS

Characteristic	Measure
Temperature, operating	-1 °C to 71 °C [30 °F to 160 °F]
Temperature, operating (optional)	-18 °C to 82 °C [0 °F to 180 °F] (NEMA 4 option required)

ELECTRICAL SPECIFICATIONS

Characteristic	Measure
Rating	NEMA 2 (optional NEMA 4, except ZKT)
Power, Model ZKW	One or two 9 V alkaline batteries (included)
Power, Model ZKT	110 Vac adapter @ 60 Hz (included)
Power, Model ZKV	11 Vdc to 32 Vdc @ 100 mA (3 ft cable included)

MECHANICAL SPECIFICATIONS

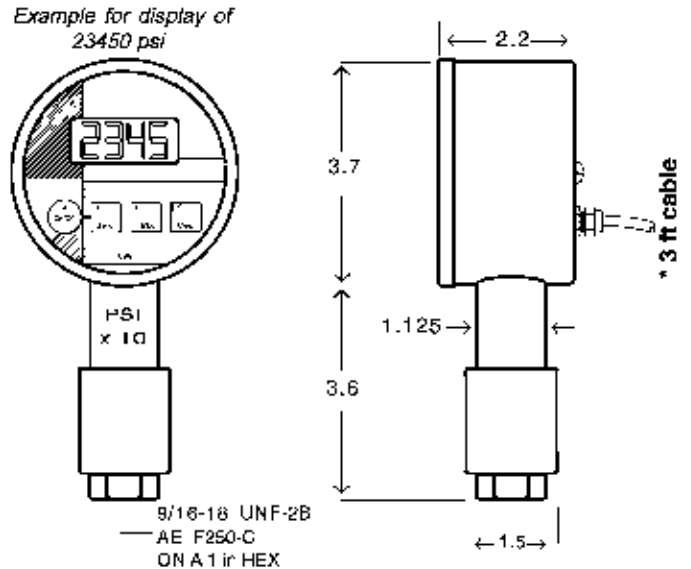
Characteristic	Measure
Diameter	93,98 mm [3.7 in]
Display	4½ LCD digits - 12,7 mm [0.5 in] high
Pressure port	9/16-18 UNF-2B female straight thread with SAE spec J514 o-ring boss (500 psi and above)
Wetted parts	Stainless steel
Case material	Stainless steel
Face membrane	Tactile feedback raised buttons
Calibration data	Stored on memory chip
Low battery indication	Standard

ADDITIONAL SPECIFICATIONS

Pressure range (psi)	Maximum safe over pressure (psi) ¹	Incremental display steps
0 psi to 15 psi = 15	75	0.005
0 psi to 50 psi = 50	250	0.01
0 psi to 100 psi = 100	500	0.02
0 psi to 200 psi = 200	1000	0.05
0 psi to 500 psi = 500	1500	0.1
0 psi to 750 psi = 750	1500	0.2
0 psi to 1000 psi = 1K	2000	0.2
0 psi to 1500 psi = 1.5K	3000	0.5
0 psi to 2000 psi = 2K	4000	0.5
0 psi to 5000 psi = 5K	7500	1
0 psi to 7500 psi = 7.5K	12000	2
0 psi to 10000 psi = 10K	15000	2

¹ Maximum safe overpressure is the pressure which the unit can experience occasionally without the loss of accuracy or permanent damage

MOUNTING DIMENSIONS AND CHARACTERISTICS



* Models ZKB, ZKE, ZKR, ZKX, ZKV

No cable for battery powered Model ZKW

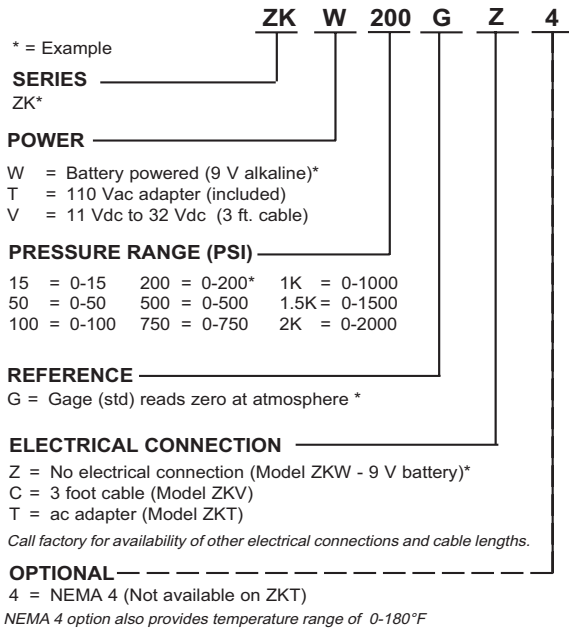
Requires certified drawing before designing mountings or fixtures.
Specifications subject to change without notice.

For reference only

Model ZK

Pressure Digital Test Gauge

ORDER GUIDE



FIELD SELECTABLE STANDARD UNITS OF MEASURE

Each gauge has the following scaling built-in for field selection:

- | | |
|-------------------|---------------------------|
| Bar = Bar | Ft H2O = Feet of water |
| mBar = Millibar | In H2O = Inches of water |
| kPa = Kilopascals | In Hg = Inches of mercury |
| MPa = Megapascals | mmHg = mm of mercury |

Consult factory for other units of measure not listed

Warranty. Honeywell warrants goods of its manufacture as being free of defective materials and faulty workmanship. Honeywell's standard product warranty applies unless agreed to otherwise by Honeywell in writing; please refer to your order acknowledgement or consult your local sales office for specific warranty details. If warranted goods are returned to Honeywell during the period of coverage, Honeywell will repair or replace, at its option, without charge those items it finds defective. **The foregoing is buyer's sole remedy and is in lieu of all warranties, expressed or implied, including those of merchantability and fitness for a particular purpose. In no event shall Honeywell be liable for consequential, special, or indirect damages.**

While we provide application assistance personally, through our literature and the Honeywell web site, it is up to the customer to determine the suitability of the product in the application.

Specifications may change without notice. The information we supply is believed to be accurate and reliable as of this printing. However, we assume no responsibility for its use.

For more information about Sensing and Control products, visit www.honeywell.com/sensing or call +1-815-235-6847

Email inquiries to info.sc@honeywell.com

WARNING **PERSONAL INJURY**

- DO NOT USE these products as safety or emergency stop devices or in any other application where failure of the product could result in personal injury.

Failure to comply with these instructions could result in death or serious injury.

WARNING **MISUSE OF DOCUMENTATION**

- The information presented in this catalogue is for reference only. DO NOT USE this document as product installation information.
- Complete installation, operation and maintenance information is provided in the instructions supplied with each product.

Failure to comply with these instructions could result in death or serious injury.

Sensing and Control
 Automation and Control Solutions
 Honeywell
 1985 Douglas Drive North
 Golden Valley, MN 55422 USA
 +1-815-235-6847
www.honeywell.com/sensing

Honeywell