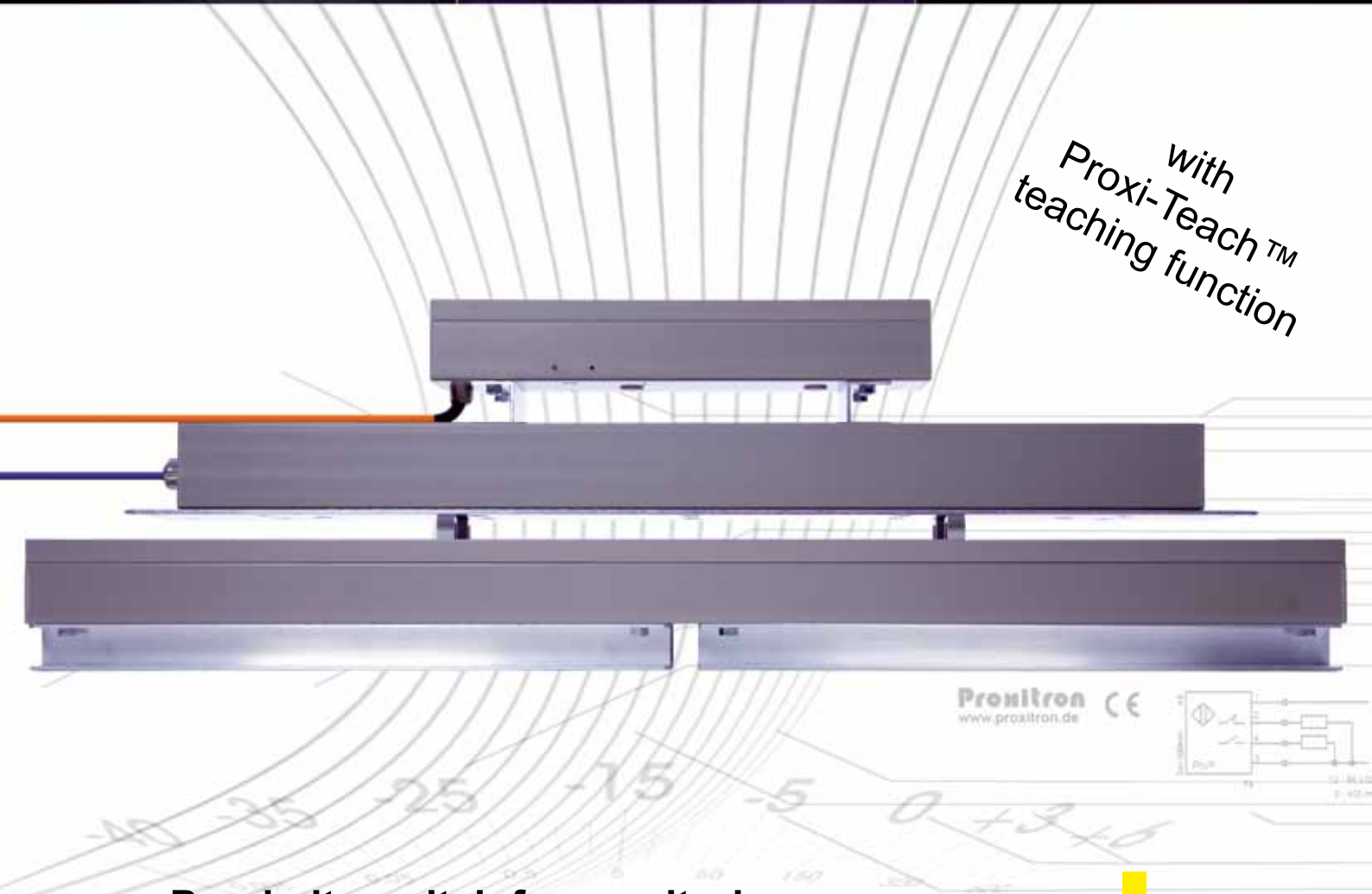


Inductive Surface Sensors



with
Proxi-Teach™
teaching function



Proxitron CE
www.proxitron.de



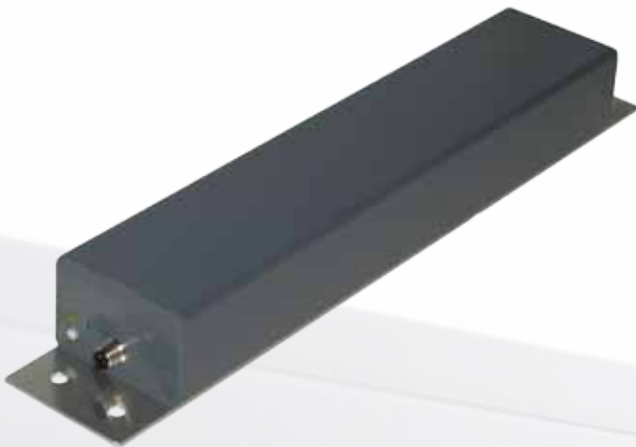
**Proximity switch for monitoring
of roller paths and conveyor tracks**

- Monitoring of roller paths and conveyor tracks
- Detection of metals, e.g. tubes, profiles, bands
- Large sensing distance, depending on object size
- Simple adaptation to every width of roller path
- Single sensor controls the roller path drive as a replacement for a row of many sensors

Sensor width 86 mm

smaller models see
also brochure P18E
Sensor Strips

IKU 3



Sensor length L (mm)

	Type	Sn (mm)	Target plate (mm)
200	IKU 321	80	200 x 100
250	IKU 325	80	250 x 100
300	IKU 331	80	300 x 100
350	IKU 335	80	350 x 100
400	IKU 341	80	400 x 100
450	IKU 345	80	450 x 100
500	IKU 351	80	500 x 100
550	IKU 355	80	550 x 100
600	IKU 361	80	600 x 100
650			
700			
750			
800			
850			
900			
950			
1000			

Sensor width 100 mm

IKU 1



Sensor length L (mm)

	Type	Sn (mm)	Target plate (mm)
200			
250			
300	IKU 131	100	300 x 250
350	IKU 135	110	450 x 250
400	IKU 141	120	500 x 250
450	IKU 145	130	550 x 250
500	IKU 151	140	600 x 250
550	IKU 155	150	650 x 250
600	IKU 161	160	700 x 250
650	IKU 165	160	750 x 250
700	IKU 171	160	800 x 250
750			
800			
850			
900			
950			
1000			

Inductive Surface Sensors

IKU 8 / IKU 2

- Self-calibration at the push of a button with Proxi-Teach™ (replaces adjustment by potentiometer at no extra cost)
- Installation in a row without problems using frequency offset versions
- Connection via plug or cable versions
- Supply voltage DC 3/4-wire 10 - 55 V or AC/DC 2-wire 20 - 260 V

Sensor width 140 mm

IKU 8



	Type	Sn (mm)	Target plate (mm)
200			
250	IKU 825	130	450 x 350
300	IKU 831	140	500 x 350
350	IKU 835	150	550 x 350
400	IKU 841	160	600 x 350
450	IKU 845	170	650 x 350
500	IKU 851	180	700 x 350
550	IKU 855	190	750 x 350
600	IKU 861	200	800 x 350
650	IKU 865	210	850 x 350
700	IKU 871	220	900 x 350
750	IKU 875	230	950 x 350
800	IKU 881	240	1000 x 350
850	IKU 885	240	1050 x 350
900	IKU 891	240	1100 x 350
950	IKU 895	240	1150 x 350
1000	IKU 8101	240	1200 x 350

Sensor length L (mm)

Sensor width 200 mm

IKU 2



	Type	Sn (mm)	Target plate (mm)
200	IKU 221	130	390 x 390
250	IKU 225	145	435 x 435
300	IKU 231	160	480 x 480
350	IKU 235	175	525 x 525
400	IKU 241	190	570 x 570
450	IKU 245	205	650 x 600
500	IKU 251	220	700 x 600
550	IKU 255	235	750 x 600
600	IKU 261	250	800 x 600
650	IKU 265	250	850 x 600
700	IKU 271	250	900 x 600
750	IKU 275	250	950 x 600
800	IKU 281	250	1000 x 600
850	IKU 285	250	1050 x 600
900	IKU 291	250	1100 x 600
950	IKU 295	250	1150 x 600
1000	IKU 2101	250	1200 x 600

Sensor length L (mm)

Inductive Surface Sensors

Type designation code

Type (see tables on previous pages)	e.g. IKU 2101							
Proxi-Teach™		T						
20 - 260 V AC/DC			0					
10 - 55 V DC			3					
230 V AC			8					
NPN - N.C.				0				
NPN - N.O.				1				
PNP - N.C. or AC 3-wire N.C.				2				
PNP - N.O. or AC 3-wire N.C.				3				
2-wire N.C. AC/DC				4				
2-wire N.O. AC/DC				5				
PNP N.C. + PNP N.O. antivalent				8				
Short circuit protected						G		
Additional protective hose coupling for cable, 3/8" or 5/16"						MG		
Standard version with fixed connecting cable*								
Connecting terminal box							D	
Plug M12x1 DC							S4	
Plug 7/8" – 16 UN (IP68)							S5	
Plug M12x1 AC							S27	
Offset oscillation frequency for row installation								F

*Connecting cables are available in different lengths and materials.
Please, tell us your requirements. We will be pleased to advise you.

Continuing brochures:
P18E Sensor Strips (e.g. for canning lines)
PIA002E Proxi-Teach™

Product range

Inductive Proximity Switches

WG 210	Sensing distance < 20 mm
WG 220	Sensing distance 20-60 mm
WG 230	Sensing distance 60-120 mm
WG 240	Sensor strips
WG 241	Surface sensors
WG 250	Ring sensors
WG 260	Inductive analog sensors and evaluation electronics

Further Sensors

WG 100	Capacitive sensors
WG 510	Piros light barriers
WG 610	Piros infrared sensors
WG 620	Piros for fibre optic cables
WG 630	Piros infrared pyrometers
WG 800	Flow sensors, air
WG 830	Flow sensors, liquid

Proxitron

SENSOREN FÜR AUTOMATION

PROXITRON GmbH
GÄRTNERSTRASSE 10
D-25335 ELSHORN
TEL. +49 (0)4121/2621-0
FAX. +49 (0)4121/2621-10
mail@proxitron.de
www.proxitron.de