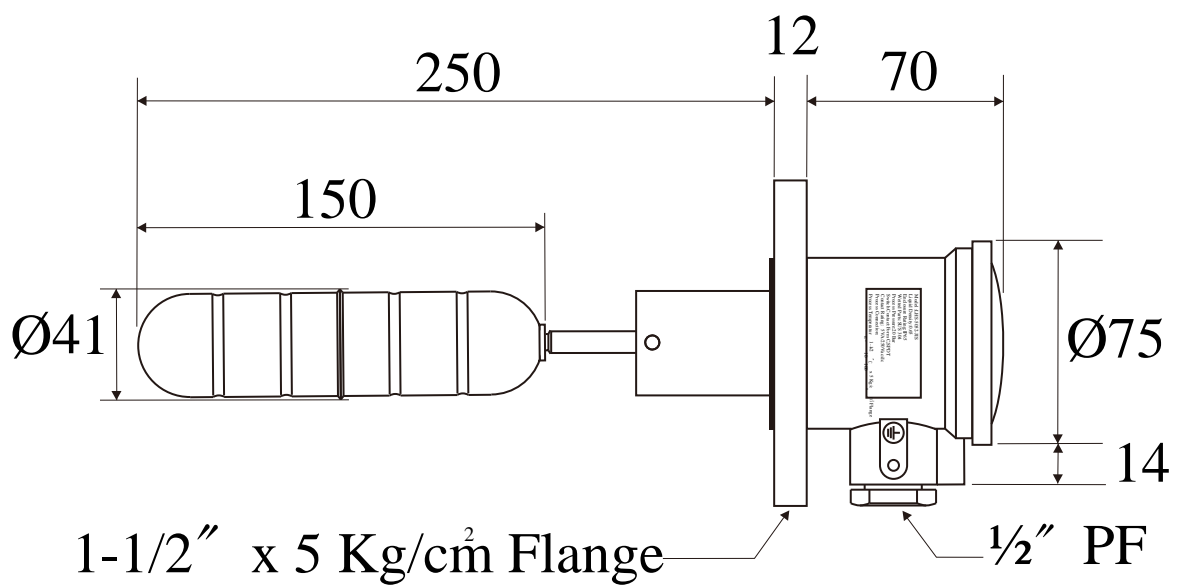
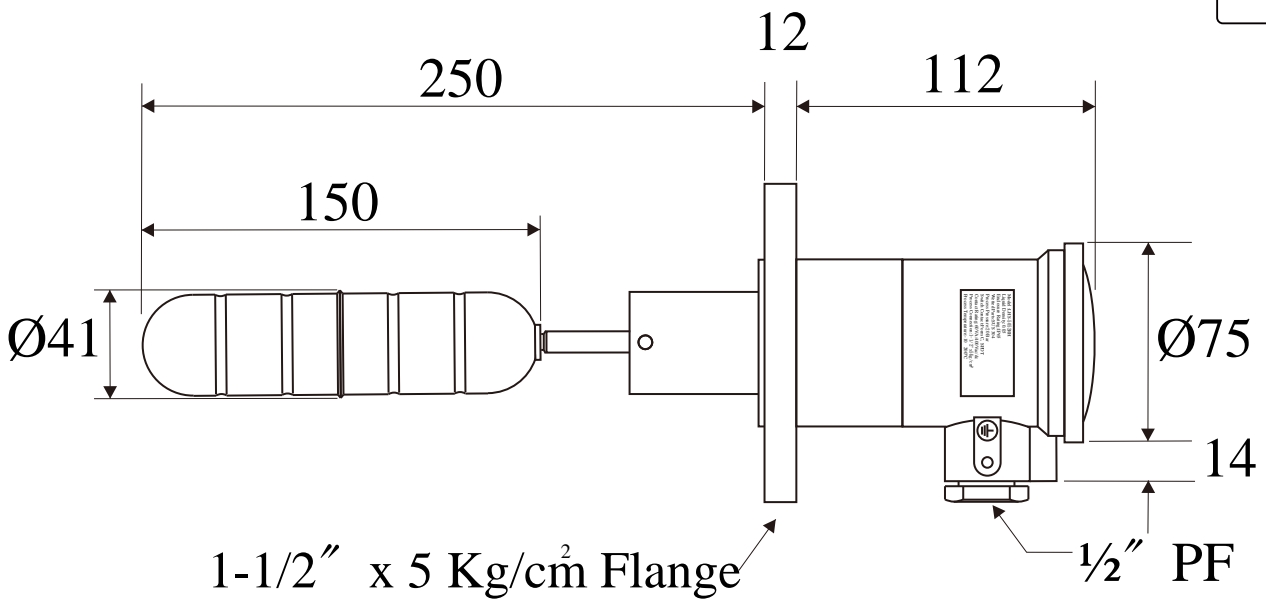
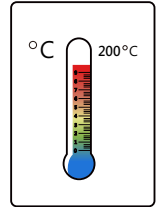
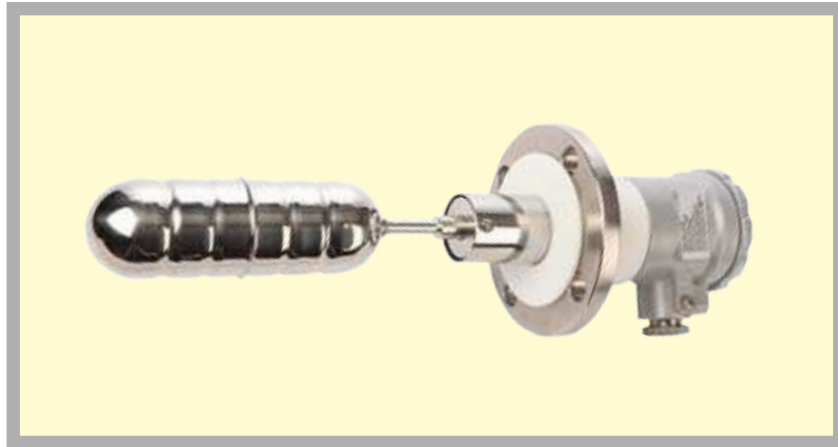


LHS-5052-JIS



JIS	
LHS-5052JIS	
Process Connection	1-1/2" x 5 Kg/cm ² Flange
Float Dimension & Material	Ø41x150 , SUS 316
Float Specific Gravity(S. G.)	0.65
Process Pressure Maxi.	20 Bar
Switch Contact & Contact Rating	Form C,SPDT,5A/250Vac
Process Operation Temperature	-10°C ~ 100°C
Material of Wetted Parts	SUS 304
Enclosure Rating (IP)	Aluminun/IP65

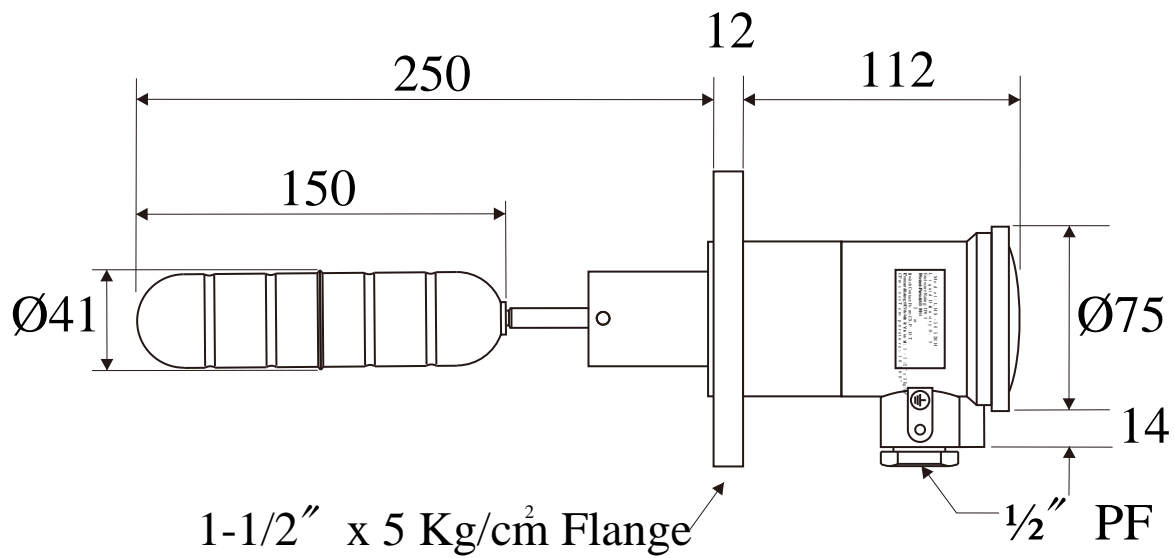
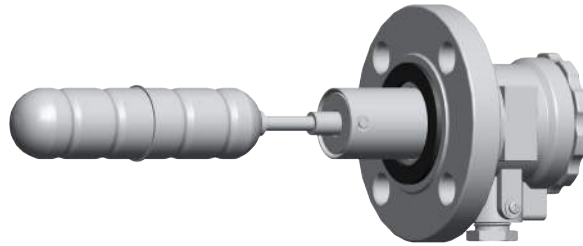
LHS-5052RH-JIS



High Temperature

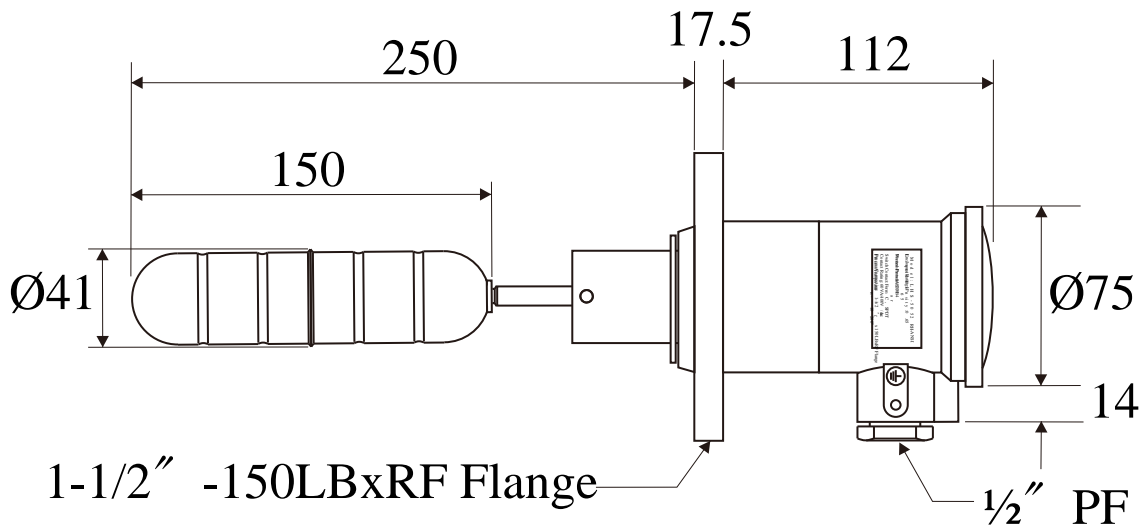
LHS-5052RH-JIS	
Process Connection	1-1/2" x 5 Kg/cm ² Flange
Float Dimension & Material	Ø41x150 , SUS 316
Float Specific Gravity(S. G.)	0.65
Process Pressure Maxi.	20 Bar
Switch Contact & Contact Rating	SPDT,60VA/400Vac/dc
Process Operation Temperature	-10°C ~ 200°C
Material of Wetted Parts	SUS 304
Enclosure Rating (IP)	Aluminun/IP 65

LHS-5052-ANSI



ANSI	
	LHS-5052-ANSI
Process Connection	1-1/2" -150LBxRF Flange
Float Dimension & Material	Ø41x150 SU 316
Float Specific Gravity(S. G.)	0.65
Process Pressure Maxi.	20Bar
Switch Contact & Contact Rating	SPDT,5A /250Vac
Process Operation Temperature	-10°C ~ 100°C
Material of Wetted Parts	SUS 304
Enclosure Rating (IP)	Aluminun/IP65

LHS-5052RH-ANSI



ANSI	
LHS-5052RH-ANSI	
Process Connection	1-1/2" -150LBxRF Flange
Float Dimension & Material	Ø41x150 SU 316
Float Specific Gravity(S. G.)	0.65
Process Pressure Maxi.	20Bar
Switch Contact & Contact Rating	SPDT,60VA/400Vac/dc
Process Operation Temperature	-10°C ~ 200°C
Material of Wetted Parts	SUS 304
Enclosure Rating (IP)	Aluminun/IP65