

Series 1000

Hydraulic Brake Pressure Switch



DESCRIPTION

The Honeywell Series 1000 pressure switch is a small, low-cost switch actuated by hydraulic fluid or gas. The switch is highly responsive for low-set-point and high burst rating requirements, and may also be used when converting the brake system to hydraulic applications.

With its IP65 sealing and high burst rating, Honeywell's Series 1000 switch often excels in harsh environments such as extreme weather conditions or particle-filled areas. In addition to its high resistance to shock and vibration, this pressure switch is designed to maintain its tolerances across temperature ranges in high system pressure environments.

FEATURES

- Low set point: actuates at 20 psi
- Reduced part count
- High burst rating (for high cost-of-failure applications)
- Banjo bolt fitting
- Sealed to IP65

POTENTIAL APPLICATIONS

- Small vehicle brake light actuation
- Compact agricultural tractors
- Utility vehicles (UTVs)
- Trucks and lift trucks
- Small self-propelled vehicles

BENEFITS

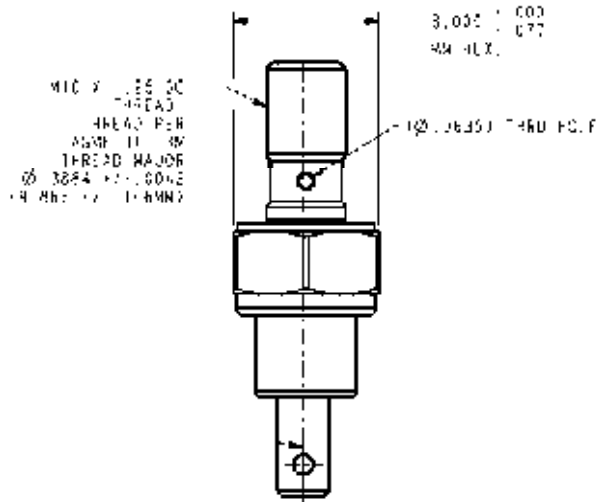
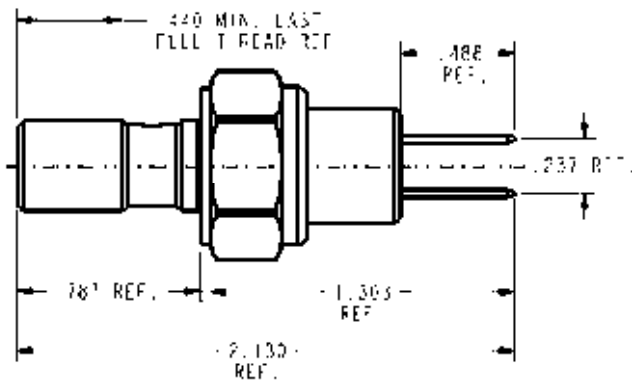
- Low set point is highly responsive
- Reduced field failures at part level
- Enhanced reliability, lowers warranty costs
- Minimized footprint
- Designed for use in high shock and vibration along with most extreme weather conditions

Series 1000

SPECIFICATIONS

Characteristic	Parameter
Type	Direct acting
Circuitry	Normally open
Connector size	M10 x 1.25 banjo fitting
Terminals	6,3 mm [0.25 in] blade
Set point	20 psi \pm 10 psi [1,37 bar \pm 0,69 bar]
Operating pressure, max.	1200 psi [82,74 bar]
Proof pressure	2400 psi [165,47 bar]
Burst pressure	4800 psi [330,95 bar]
Operating temperature	-40 °C to 121 °C [-40 °F to 250 °F]
Operating media	DOT 3 or 4 brake fluid
Electrical rating	12 Vdc with two-1157 bulbs (4.4 A)
Contacts	Silver plated copper
Diaphragm	EPDM
Housing	Rynite 545 glass filled
Base	Trivalent plated steel
Spring	17-7 PH stainless steel
Connector options	M10 x 1.25 double banjo; M10 x 1, 1/8-27 NPT

DIMENSIONS



Hydraulic Brake Pressure Switch

ORDER GUIDE

Catalog Listing	Description
83355	Series 1000 hydraulic brake pressure switch, normally open, 20 psi, M10 x 1.25 single banjo fitting, blade terminals
83354	Series 1000 hydraulic brake pressure switch, normally open, 20 psi, M10 x 1.25 double banjo fitting, blade terminals



WARNING

PERSONAL INJURY

DO NOT USE these products as safety or emergency stop devices or in any other application where failure of the product could result in personal injury.

Failure to comply with these instructions could result in death or serious injury.



WARNING

MISUSE OF DOCUMENTATION

- The information presented in this product sheet is for reference only. Do not use this document as a product installation guide.
- Complete installation, operation, and maintenance information is provided in the instructions supplied with each product.

Failure to comply with these instructions could result in death or serious injury.

WARRANTY/REMEDY

Honeywell warrants goods of its manufacture as being free of defective materials and faulty workmanship. Honeywell's standard product warranty applies unless agreed to otherwise by Honeywell in writing; please refer to your order acknowledgement or consult your local sales office for specific warranty details. If warranted goods are returned to Honeywell during the period of coverage, Honeywell will repair or replace, at its option, without charge those items it finds defective. **The foregoing is buyer's sole remedy and is in lieu of all other warranties, expressed or implied, including those of merchantability and fitness for a particular purpose. In no event shall Honeywell be liable for consequential, special, or indirect damages.**

While we provide application assistance personally, through our literature and the Honeywell web site, it is up to the customer to determine the suitability of the product in the application.

Specifications may change without notice. The information we supply is believed to be accurate and reliable as of this printing. However, we assume no responsibility for its use.

SALES AND SERVICE

Honeywell serves its customers through a worldwide network of sales offices, representatives and distributors. For application assistance, current specifications, pricing or name of the nearest Authorized Distributor, contact your local sales office or:

E-mail: info.sc@honeywell.com

Internet: www.honeywell.com/sensing

Phone and Fax:

Asia Pacific	+65 6355-2828
	+65 6445-3033 Fax
Europe	+44 (0) 1698 481481
	+44 (0) 1698 481676 Fax
Latin America	+1-305-805-8188
	+1-305-883-8257 Fax
USA/Canada	+1-800-537-6945
	+1-815-235-6847
	+1-815-235-6545 Fax

Sensing and Control

Honeywell

1985 Douglas Drive North

Golden Valley, Minnesota 55422

www.honeywell.com/sensing

009581-1-EN IL50 GLO Printed in USA
October 2008

Copyright © 2008 Honeywell International Inc. All rights reserved.

Honeywell